

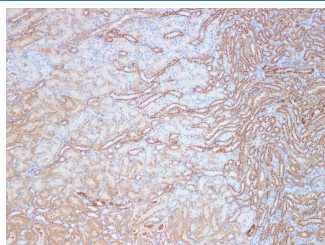
## KLK10 Polyclonal Antibody

catalog number: E-AB-40295

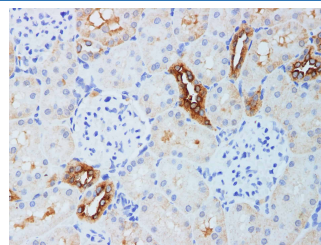
**Note:** Centrifuge before opening to ensure complete recovery of vial contents.

Description	
Reactivity	Mouse;Rat
Immunogen	Recombinant Rat Glandular kallikrein-10 protein
Host	Rabbit
Isotype	IgG
Purification	Antigen Affinity Purification
Conjugation	Unconjugated
Buffer	PBS with 0.05% proclin 300, 1% protective protein and 50% glycerol,pH7.4
Applications	Recommended Dilution
IHC	1:100-1:300

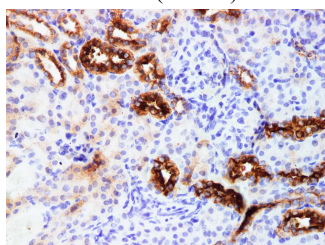
### Data



Immunohistochemistry of paraffin-embedded Rat kidney using KLK10 Polyclonal Antibody at dilution of 1:200(1×100)



Immunohistochemistry of paraffin-embedded Rat kidney using KLK10 Polyclonal Antibody at dilution of 1:200(1×400)



Immunohistochemistry of paraffin-embedded Mouse kidney using KLK10 Polyclonal Antibody at dilution of 1:200

Preparation & Storage	
Storage	Store at -20°C Valid for 12 months. Avoid freeze / thaw cycles.
Shipping	The product is shipped with ice pack,upon receipt,store it immediately at the temperature recommended.

**Background**

Kallikreins are a subgroup of serine proteases having diverse physiological functions. Growing evidence suggests that many kallikreins are implicated in carcinogenesis and some have potential as novel cancer and other disease biomarkers. This gene is one of the fifteen kallikrein subfamily members located in a cluster on chromosome 19. Its encoded protein is secreted and may play a role in suppression of tumorigenesis in breast and prostate cancers. Alternate splicing of this gene results in multiple transcript variants encoding the same protein.

### For Research Use Only