

## MUC15 Polyclonal Antibody

**catalog number: E-AB-13920**

**Note:** Centrifuge before opening to ensure complete recovery of vial contents.

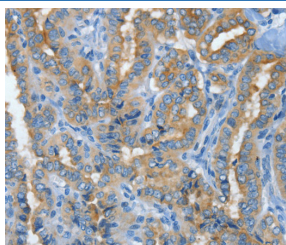
### Description

<b>Reactivity</b>	Human
<b>Immunogen</b>	Recombinant protein of human MUC15
<b>Host</b>	Rabbit
<b>Isotype</b>	IgG
<b>Purification</b>	Affinity purification
<b>Buffer</b>	Phosphate buffered solution, pH 7.4, containing 0.05% stabilizer and 50% glycerol.

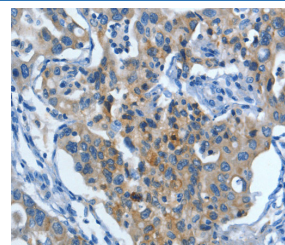
### Applications

Applications	Recommended Dilution
IHC	1:25-1:100

### Data



Immunohistochemistry of paraffin-embedded Human thyroid cancer tissue using MUC15 Polyclonal Antibody at dilution 1:50



Immunohistochemistry of paraffin-embedded Human lung cancer tissue using MUC15 Polyclonal Antibody at dilution 1:50

### Preparation & Storage

<b>Storage</b>	Store at -20°C Valid for 12 months. Avoid freeze / thaw cycles.
<b>Shipping</b>	The product is shipped with ice pack, upon receipt, store it immediately at the temperature recommended.

### Background

Mucins are a family of high molecular weight, heavily glycosylated proteins (glycoconjugates) produced by epithelial tissues in most metazoans. Mucin 15 is involved in cell adhesion to the extracellular matrix. It is primarily expressed in prostate, testis, lung, spleen, thymus, ovary, small intestine, colon, bone marrow, lymph node, lung and peripheral blood leukocytes. Mucin 15 is a highly glycosylated protein.

### For Research Use Only