

# COL3A1 Monoclonal Antibody

catalog number: E-AB-22071

**Note:** Centrifuge before opening to ensure complete recovery of vial contents.

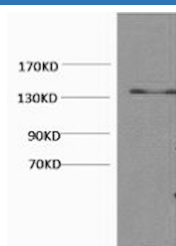
## Description

<b>Reactivity</b>	Human;Mouse;Rat
<b>Immunogen</b>	Synthetic Peptide
<b>Host</b>	Mouse
<b>Isotype</b>	IgG
<b>Clone</b>	5G2
<b>Purification</b>	Protein A purification
<b>Conjugation</b>	Unconjugated
<b>buffer</b>	Phosphate buffered solution, pH 7.4, containing 0.05% stabilizer, 0.5% protein protectant and 50% glycerol.

## Applications

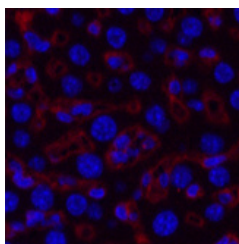
Applications	Recommended Dilution
<b>WB</b>	1:500-1:2000
<b>IHC</b>	1:50-300
<b>IF</b>	1:100-1:300

## Data

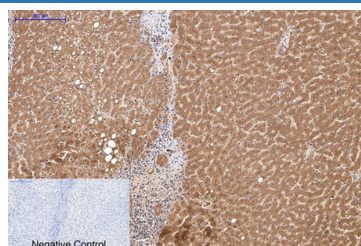


Western Blot analysis of Hela cells using COL3A1 Monoclonal Antibody at dilution of 1:1000.

**Observed-MV:138 kDa**  
**Calculated-MV:139 kDa**



Immunofluorescence analysis of Mouse liver tissue using COL3A1 Monoclonal Antibody at dilution of 1:200.



Immunohistochemistry of paraffin-embedded Human liver tissue using COL3A1 Monoclonal Antibody at dilution of 1:200.

## Preparation & Storage

<b>Storage</b>	Store at -20°C Valid for 12 months. Avoid freeze / thaw cycles.
<b>Shipping</b>	The product is shipped with ice pack, upon receipt, store it immediately at the temperature recommended.

## Background

## For Research Use Only

# COL3A1 Monoclonal Antibody

catalog number: E-AB-22071



---

This gene encodes the pro-alpha1 chains of type III collagen, a fibrillar collagen that is found in extensible connective tissues such as skin, lung, uterus, intestine and the vascular system, frequently in association with type I collagen. Mutations in this gene are associated with Ehlers-Danlos syndrome types IV, and with aortic and arterial aneurysms. Two transcripts, resulting from the use of alternate polyadenylation signals, have been identified for this gene.

## For Research Use Only

---

A Reliable Research Partner in Life Science and Medicine  
Tel: 400-999-2100

Email: [techsupport@elabscience.cn](mailto:techsupport@elabscience.cn)

Web: [www.elabscience.cn](http://www.elabscience.cn)

Rev. V1.7