

## SPATA6 Polyclonal Antibody

**catalog number: E-AB-14426**

**Note:** Centrifuge before opening to ensure complete recovery of vial contents.

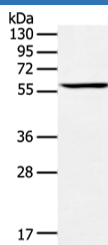
### Description

<b>Reactivity</b>	Human;Mouse;Rat
<b>Immunogen</b>	Recombinant protein of human SPATA6
<b>Host</b>	Rabbit
<b>Isotype</b>	IgG
<b>Purification</b>	Affinity purification
<b>Buffer</b>	Phosphate buffered solution, pH 7.4, containing 0.05% stabilizer and 50% glycerol.

### Applications

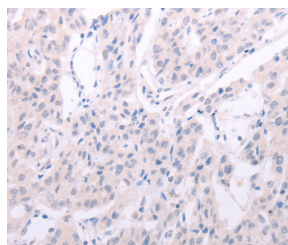
Applications	Recommended Dilution
<b>WB</b>	1:200-1:1000
<b>IHC</b>	1:25-1:100

### Data

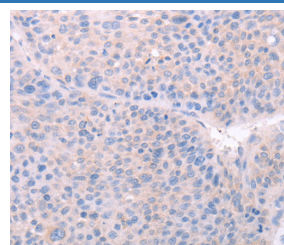


Western Blot analysis of Human testis tissue using SPATA6 Polyclonal Antibody at dilution of 1:1000

**Calculated-MV:56 kDa**



Immunohistochemistry of paraffin-embedded Human lung cancer using SPATA6 Polyclonal Antibody at dilution of 1:40



Immunohistochemistry of paraffin-embedded Human liver cancer using SPATA6 Polyclonal Antibody at dilution of 1:40

### Preparation & Storage

<b>Storage</b>	Store at -20°C Valid for 12 months. Avoid freeze / thaw cycles.
<b>Shipping</b>	The product is shipped with ice pack, upon receipt, store it immediately at the temperature recommended.

### Background

The Spata6 gene consists of 15 exons ranging in size between 40 and 596 bp. It may play a role in spermatid maturation or sperm function. The Spata6 gene was localized to chromosome 5, region q34-35 in the rat and to chromosome 1, region p32-35 in the human.

### For Research Use Only