

VCP Polyclonal Antibody

Catalog Number: E-AB-18489

Note: Centrifuge before opening to ensure complete recovery of vial contents.

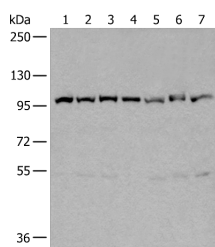
Description

Reactivity	Human, Mouse, Rat
Immunogen	Fusion protein of human VCP
Host	Rabbit
Isotype	IgG
Purification	Antigen affinity purification
Conjugation	Unconjugated
Formulation	PBS with 0.05% NaN ₃ and 40% Glycerol, pH7.4

Applications Recommended Dilution

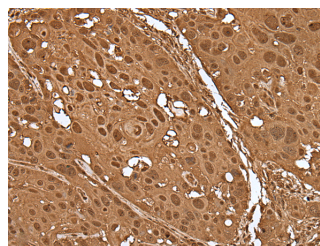
WB	1:500-1:2000
IHC	1:30-1:150
ELISA	1:5000-1:10000

Data

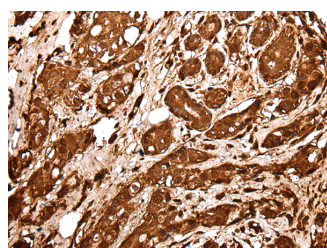


Western blot analysis of 231 HeLa A549 A431 HEPG2 Jurkat and K562 cell lysates using VCP Polyclonal Antibody at dilution of 1:400

Observed MW: Refer to figures
Calculated Mw: 89 kDa



Immunohistochemistry of paraffin-embedded Human esophagus cancer tissue using VCP Polyclonal Antibody at dilution of 1:30 (×200)



Immunohistochemistry of paraffin-embedded Human breast cancer tissue using VCP Polyclonal Antibody at dilution of 1:30 (×200)

Preparation & Storage

Storage Store at -20°C. Avoid freeze / thaw cycles.

Background

For Research Use Only

A Reliable Research Partner in Life Science and Medicine

Toll-free: 1-888-852-8623

Web: www.elabscience.com

Tel: 1-832-243-6086

Email: techsupport@elabscience.com

Fax: 1-832-243-6017

VCP Polyclonal Antibody

Catalog Number: E-AB-18489



VCP (Valosin-containing protein) belongs to the AAA ATPase family. VCP was first identified as a result of attempts to clone a putative peptide hormone called valosin. It was found that the cloned cDNA encoded a ubiquitously expressed 90 kDa cytosolic protein, termed VCP, which showed none of the characteristics of a peptide hormone precursor. Defects in VCP are the cause of inclusion body myopathy with early-onset Paget disease and frontotemporal dementia (IBMPFD) and amyotrophic lateral sclerosis type 14 with or without frontotemporal dementia (ALS14)

For Research Use Only

A Reliable Research Partner in Life Science and Medicine

Toll-free: 1-888-852-8623

Tel: 1-832-243-6086

Fax: 1-832-243-6017

Web: www.elabscience.com

Email: techsupport@elabscience.com