

INPP1 Polyclonal Antibody

catalog number: **E-AB-18708**

Note: Centrifuge before opening to ensure complete recovery of vial contents.

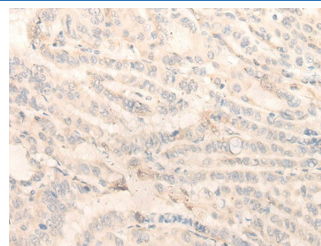
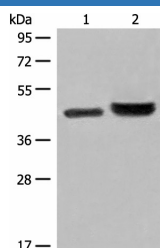
Description

Reactivity	Human
Immunogen	Fusion protein of human INPP1
Host	Rabbit
Isotype	IgG
Purification	Antigen affinity purification
Buffer	Phosphate buffered solution, pH 7.4, containing 0.05% stabilizer and 50% glycerol.

Applications Recommended Dilution

WB	1:500-1:2000
IHC	1:40-1:200

Data



Western blot analysis of 231 cell and Human fetal liver tissue Immunohistochemistry of paraffin-embedded Human thyroid lysates using INPP1 Polyclonal Antibody at dilution of 1:500 cancer tissue using INPP1 Polyclonal Antibody at dilution of 1:35(×200)

Observed-MW:Refer to figures

Calculated-MW:44 kDa

Preparation & Storage

Storage	Store at -20°C Valid for 12 months. Avoid freeze / thaw cycles.
Shipping	The product is shipped with ice pack,upon receipt,store it immediately at the temperature recommended.

Background

This gene encodes the enzyme inositol polyphosphate-1-phosphatase, one of the enzymes involved in phosphatidylinositol signaling pathways. This enzyme removes the phosphate group at position 1 of the inositol ring from the polyphosphates inositol 1,4-bisphosphate and inositol 1,3,4-trisphosphate.

For Research Use Only