

## MTMR6 Polyclonal Antibody

catalog number: **E-AB-65275**

**Note:** Centrifuge before opening to ensure complete recovery of vial contents.

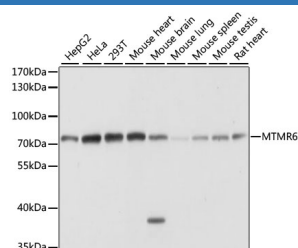
### Description

<b>Reactivity</b>	Human;Mouse;Rat
<b>Immunogen</b>	Recombinant fusion protein of human MTMR6 (NP_004676.3).
<b>Host</b>	Rabbit
<b>Isotype</b>	IgG
<b>Purification</b>	Affinity purification
<b>Buffer</b>	Phosphate buffered solution, pH 7.4, containing 0.05% stabilizer and 50% glycerol.

### Applications

<b>WB</b>	1:200-1:2000
-----------	--------------

### Data



Western blot analysis of extracts of various cell lines using MTMR6 Polyclonal Antibody at dilution of 1:1000.

**Observed-MW:72 kDa**

**Calculated-MW:63 kDa/71 kDa**

### Preparation & Storage

<b>Storage</b>	Store at -20°C Valid for 12 months. Avoid freeze / thaw cycles.
<b>Shipping</b>	The product is shipped with ice pack, upon receipt, store it immediately at the temperature recommended.

### Background

MTMR6 (Myotubularin Related Protein 6) is a Protein Coding gene. Diseases associated with MTMR6 include Myopathy, Centronuclear, X-Linked and Retinohepatoendocrinologic Syndrome. Among its related pathways are Inositol phosphate metabolism (KEGG) and PI Metabolism. Gene Ontology (GO) annotations related to this gene include phosphatase activity and protein serine/threonine phosphatase activity. An important paralog of this gene is MTMR7.

### For Research Use Only