

Recombinant ZO1 Monoclonal Antibody

catalog number: **AN300738L**

Note: Centrifuge before opening to ensure complete recovery of vial contents.

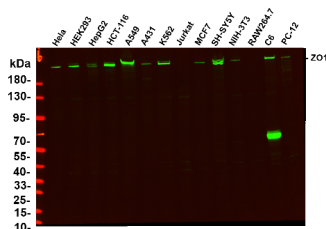
Description

Reactivity	Human;Mouse;Rat;Pig
Immunogen	Recombinant Human ZO1 protein
Host	Rabbit
Isotype	IgG, κ
Clone	6H11
Purification	Protein A
Buffer	PBS, 50% glycerol, 0.05% Proclin 300, 0.05% protein protectant.

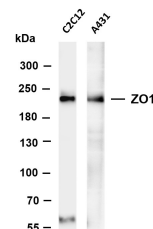
Applications

Applications	Recommended Dilution
IHC	1:1000-1:4000
WB	1:2000-1:10000
IF	1:200-1:1000
ELISA	1:5000-1:20000

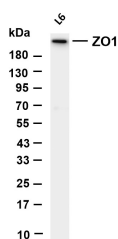
Data



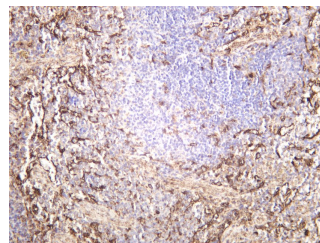
Various whole cell lysates were separated by 4-20% SDS-PAGE, and the primary antibody was used at 4°C, over night with a 1:5000 dilution. The Dylight 800-conjugated Goat anti-Rabbit antibody was used to detect the antibody. Lane 1: Hela Lane 2: HEK293 Lane 3: HepG2 Lane 4: HCT-116 Lane 5: A549 Lane 6: A431 Lane 7: K562 Lane 8: Jurkat Lane 9: MCF7 Lane 10: SH-SY5Y Lane 11: NIH-3T3 Lane 12: RAW264.7 Lane 13: C6 Lane 14: PC-12



Various whole cell lysates were separated by 4-8% SDS-PAGE, and the membrane was blotted with anti-ZO1 antibody. The HRP-conjugated Goat anti-Rabbit IgG(H + L) antibody was used to detect the antibody. Lane 1: C2C12 Lane 2: A431 Predicted band size: 195kDa Observed band size: 220kDa



Various whole cell lysates were separated by 4-20% SDS-PAGE, and the membrane was blotted with anti-ZO1 antibody. The HRP-conjugated Goat anti-Rabbit IgG(H + L) antibody was used to detect the antibody. Lane 1: L6 Predicted band size: 195kDa Observed band size: 220kDa



Mouse spleen was stained with anti-ZO1 rabbit antibody

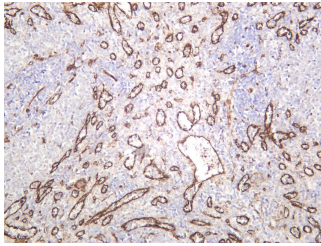
For Research Use Only

Toll-free: 1-888-852-8623
Web: www.elabscience.com

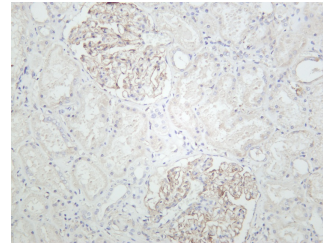
Tel: 1-832-243-6086
Email: techsupport@elabscience.com

Fax: 1-832-243-6017

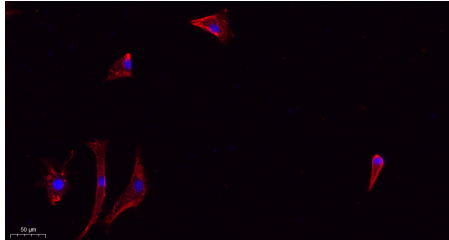
Rev. V1.2



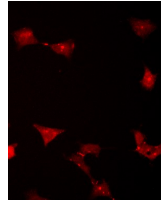
Rat spleen was stained with anti-ZO1 rabbit antibody



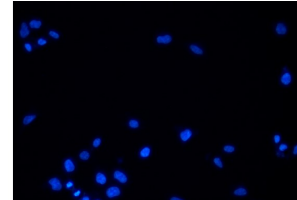
Human kidney was stained with anti-ZO1 rabbit antibody



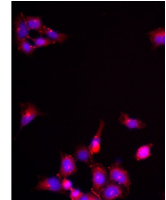
Immunofluorescence analysis of A549. 1, primary Antibody (red) was diluted at 1:200 (4°C overnight). 2, Goat Anti Rabbit IgG (H&L) - Alexa Fluor 594 Secondary antibody was diluted at 1:1000 (room temperature, 50min). 3, DAPI (blue) 10min.



A



B



C

Immunofluorescence analysis of HEK293. Picture A: ZO-1 antibody (red). Picture B: DAPI (blue). Picture C: Merge of A+B

Preparation & Storage

Storage	Store at -20°C Valid for 12 months. Avoid freeze / thaw cycles.
Shipping	Ice bag

Background

This gene encodes a protein located on a cytoplasmic membrane surface of intercellular tight junctions. The encoded protein may be involved in signal transduction at cell-cell junctions. Alternative splicing of this gene results in multiple transcript variants.