

Recombinant Mouse IL-2RG/CD132 Protein (Fc Tag)

Catalog Number: PKSM041318

Note: Centrifuge before opening to ensure complete recovery of vial contents.

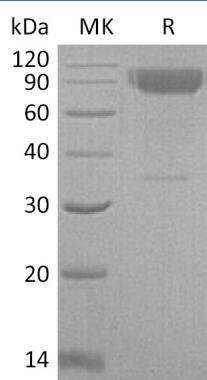
Description

Species	Mouse
Source	HEK293 Cells-derived Mouse IL-2RG/CD132 protein Ser25-Ala263, with an C-terminal Fc
Calculated MW	55.1 kDa
Observed MW	80-100 kDa
Accession	Q3UPA9
Bio-activity	Not validated for activity

Properties

Purity	> 95 % as determined by reducing SDS-PAGE.
Endotoxin	< 1.0 EU per µg of the protein as determined by the LAL method.
Storage	Generally, lyophilized proteins are stable for up to 12 months when stored at -20 to -80 °C. Reconstituted protein solution can be stored at 4-8°C for 2-7 days. Aliquots of reconstituted samples are stable at < -20°C for 3 months.
Shipping	This product is provided as lyophilized powder which is shipped with ice packs.
Formulation	Lyophilized from a 0.2 µm filtered solution of PBS, pH 7.4. Normally 5% - 8% trehalose, mannitol and 0.01% Tween 80 are added as protectants before lyophilization. Please refer to the specific buffer information in the printed manual.
Reconstitution	Please refer to the printed manual for detailed information.

Data



Background

The Interleukin-2 receptor gamma chain (IL-2 R γ , CD132) of the high affinity functional mouse IL-2 receptor complex is a member the hematopoietin receptor family. It is expressed on most lymphocyte (white blood cell) populations, and its gene is found on the X-chromosome of mammals. Common IL2 receptor- γ Chain is required for IL-2 receptor signaling. Besides IL-2, the Common IL2 receptor- γ chain has been shown to be a component of the functional receptor complexes for IL-4, IL-7, IL-9 and IL-15. It is a component of multiple cytokine receptors that are essential for lymphocyte development and function. Common IL2 receptor- γ Chain is also designated the common gamma chain.

For Research Use Only

Toll-free: 1-888-852-8623
Web: www.elabscience.com

Tel: 1-832-243-6086
Email: techsupport@elabscience.com

Fax: 1-832-243-6017