

MAP1LC3B Monoclonal Antibody

catalog number: E-AB-22132

Note: Centrifuge before opening to ensure complete recovery of vial contents.

Description

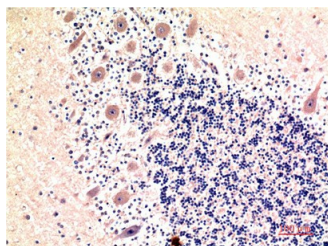
Reactivity	Human
Immunogen	Recombinant Protein of LC3B of MAP1LC3B
Host	Mouse
Isotype	IgG
Clone	6E4
Purification	Protein A purification
Conjugation	Unconjugated
Buffer	Phosphate buffered solution, pH 7.4, containing 0.05% stabilizer, 0.5% protein protectant and 50% glycerol.

Applications

Recommended Dilution

IHC	1:100-200
------------	-----------

Data



Immunohistochemistry of paraffin-embedded Human brain tissue using MAP1LC3B Monoclonal Antibody at dilution of 1:200.

Preparation & Storage

Storage	Store at -20°C Valid for 12 months. Avoid freeze / thaw cycles.
Shipping	The product is shipped with ice pack, upon receipt, store it immediately at the temperature recommended.

Background

The product of this gene is a subunit of neuronal microtubule-associated MAP1A and MAP1B proteins, which are involved in microtubule assembly and important for neurogenesis. Studies on the rat homolog implicate a role for this gene in autophagy, a process that involves the bulk degradation of cytoplasmic component. MAP1LC3B (Microtubule Associated Protein 1 Light Chain 3 Beta) is a Protein Coding gene. Diseases associated with MAP1LC3B include Sporadic Pheochromocytoma and Lacrimal Gland Adenocarcinoma. Among its related pathways are Vesicle-mediated transport and Senescence and Autophagy in Cancer. GO annotations related to this gene include microtubule binding. An important paralog of this gene is MAP1LC3B2.

For Research Use Only