

Recombinant Human 2B4/CD244 Protein (Fc Tag)

Catalog Number: PKSH031921

Note: Centrifuge before opening to ensure complete recovery of vial contents.

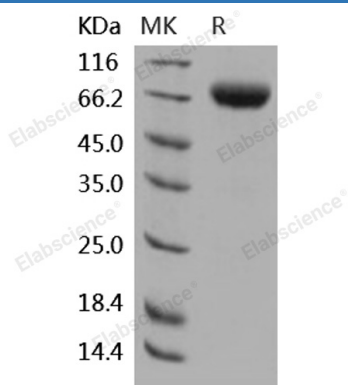
Description

Species	Human
Source	HEK293 Cells-derived Human 2B4/CD244 protein Met 1-Arg221, with an C-terminal hFc
Calculated MW	49.0 kDa
Observed MW	70-80 kDa
Accession	NP_057466.1
Bio-activity	Immobilized human CD48 at 10 µg/ml (100 µl/well) can bind recombinant human 2B4 / CD244 with a linear range of 0.004-0.4 µg/ml.

Properties

Purity	> 97 % as determined by reducing SDS-PAGE.
Endotoxin	< 1.0 EU per µg of the protein as determined by the LAL method.
Storage	Generally, lyophilized proteins are stable for up to 12 months when stored at -20 to -80 °C. Reconstituted protein solution can be stored at 4-8°C for 2-7 days. Aliquots of reconstituted samples are stable at < -20°C for 3 months.
Shipping	This product is provided as lyophilized powder which is shipped with ice packs.
Formulation	Lyophilized from sterile PBS, pH 7.4 Normally 5% - 8% trehalose, mannitol and 0.01% Tween 80 are added as protectants before lyophilization. Please refer to the specific buffer information in the printed manual.
Reconstitution	Please refer to the printed manual for detailed information.

Data



> 97 % as determined by reducing SDS-PAGE.

Background

For Research Use Only

The CD244 antigen; also known as 2B4; is a cell surface glycoprotein implicated in the regulation of natural killer and T lymphocyte function. 2B4 is a member of the signaling lymphocyte activation molecule (SLAM)-related receptor family and is important for stimulating NK cell cytotoxicity and cytokine production; which is expressed on all NK cells; a subpopulation of T cells; monocytes and basophils. The 2B4 antigen identified on NK cells and T cells is capable of transmitting stimulatory signals and non-MHC-restricted killing. Reported as an activating receptor; human 2B4 can effectively activate and enhance NK cell-mediated cytotoxicity; induce secretion of IFN- γ ; and matrix metalloproteinases (MMPs); as well as NK cell invasiveness. As a cell surface glycoprotein of the Ig-superfamily structurally related to CD2-like molecules such as CD2; CD48; CD58; CD84; Ly-9; and SLAM; 2B4 (CD244) is expressed on all human NK cells; a subpopulation of T cells; basophils and monocytes. 2B4 activates NK cell mediated cytotoxicity; induces secretion of IFN- γ and matrix metalloproteinases; and NK cell invasiveness. Detection: Antibodies Detection: ELISA Antibodies Detection: IP Antibodies Detection: FCM Antibodies Co-inhibitory Targets