

HSP27 Polyclonal Antibody

catalog number: E-AB-31748

Note: Centrifuge before opening to ensure complete recovery of vial contents.

Description

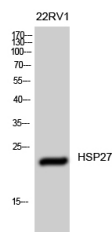
Reactivity	Human;Mouse;Rat
Immunogen	Synthesized peptide derived from human HSP27 around the non-phosphorylation site of Ser15.
Host	Rabbit
Isotype	IgG
Purification	Affinity purification
Conjugation	Unconjugated
Buffer	Phosphate buffered solution, pH 7.4, containing 0.05% stabilizer, 0.5% protein protectant and 50% glycerol.

Applications

Recommended Dilution

WB	1:500-1:2000
IHC	1:100-1:300
IF	1:50-1:200

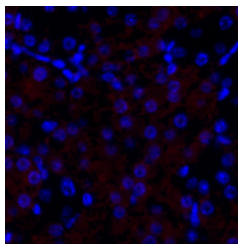
Data



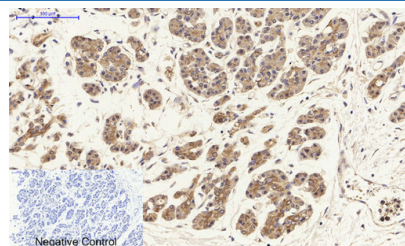
Western Blot analysis of 22RV1 cells using HSP27 Polyclonal Antibody at dilution of 1:1000.

Observed-MW:27 kDa

Calculated-MW:23 kDa



Immunofluorescence analysis of Mouse kidney tissue using HSP27 Polyclonal Antibody at dilution of 1:200.



Immunohistochemistry of paraffin-embedded Human stomach cancer tissue using HSP27 Polyclonal Antibody at dilution of 1:200.

Preparation & Storage

Storage	Store at -20°C Valid for 12 months. Avoid freeze / thaw cycles.
Shipping	The product is shipped with ice pack, upon receipt, store it immediately at the temperature recommended.

Background

For Research Use Only

Involved in stress resistance and actin organization.