

## HCN1 Polyclonal Antibody

catalog number: E-AB-15708

**Note:** Centrifuge before opening to ensure complete recovery of vial contents.

### Description

<b>Reactivity</b>	Human;Mouse;Rat
<b>Immunogen</b>	Synthetic peptide of human HCN1
<b>Host</b>	Rabbit
<b>Isotype</b>	IgG
<b>Purification</b>	Affinity purification
<b>Conjugation</b>	Unconjugated
<b>Buffer</b>	Phosphate buffered solution, pH 7.4, containing 0.05% stabilizer and 50% glycerol.

### Applications

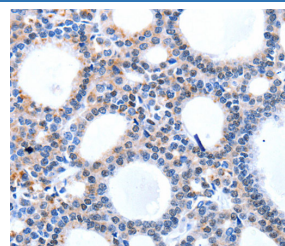
### Recommended Dilution

<b>WB</b>	1:500-1:2000
<b>IHC</b>	1:25-1:100

### Data



Western Blot analysis of Hela cell using HCN1 Polyclonal Antibody at dilution of 1:950  
**Calculated-MW:99 kDa**



Immunohistochemistry of paraffin-embedded Human thyroid cancer using HCN1 Polyclonal Antibody at dilution of 1:50

### Preparation & Storage

<b>Storage</b>	Store at -20°C Valid for 12 months. Avoid freeze / thaw cycles.
<b>Shipping</b>	The product is shipped with ice pack, upon receipt, store it immediately at the temperature recommended.

### Background

The membrane protein encoded by this gene is a hyperpolarization-activated cation channel that contributes to the native pacemaker currents in heart and neurons. The encoded protein can homodimerize or heterodimerize with other pore-forming subunits to form a potassium channel. This channel may act as a receptor for sour tastes.