

Recombinant chicken IL2/IL-2/Interleukin-2 protein (His tag)



Catalog Number:PDEO100007

Note: Centrifuge before opening to ensure complete recovery of vial contents.

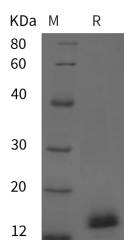
Description

| | |
|------------------------------------|---|
| Synonyms | interleukin-2;IL2;IL 2;IL-2;IL2;Interleukin 2 |
| Species | Chicken |
| Expression Host | E.coli |
| Sequence | Ala 23-Lys 143 |
| Accession | O73883 |
| Calculated Molecular Weight | 13.2 kDa |
| Observed molecular weight | 14 kDa |
| Tag | C-His |

Properties

| | |
|-----------------------|---|
| Purity | > 95 % as determined by reducing SDS-PAGE. |
| Endotoxin | Please contact us for more information. |
| Storage | Generally, lyophilized proteins are stable for up to 12 months when stored at -20 to -80°C. Reconstituted protein solution can be stored at 4-8°C for 2-7 days. Aliquots of reconstituted samples are stable at < -20°C for 3 months. |
| Shipping | This product is provided as lyophilized powder which is shipped with ice packs. |
| Formulation | Lyophilized from sterile PBS, pH 7.4. Normally 5 % - 8 % trehalose, mannitol and 0.01 % Tween80 are added as protectants before lyophilization. Please refer to the specific buffer information in the printed manual. |
| Reconstitution | Please refer to the printed manual for detailed information. |

Data



> 95 % as determined by reducing SDS-PAGE.

Background

IL2 is a secreted cytokine involved in the operation and regulation of immune system. IL2 plays a pivotal role in T-cell activation and effector functions, including T cell proliferation, interferon- γ production and cytotoxicity. IL2 can stimulate the propagation of lymphocytes and induce the cytotoxic T lymphocytes and lymphokine-activated killer cells for tumor cells. IL2 also influences memory T cell homeostasis through the regulation of memory T cell numbers and enhances major histocompatibility complex II (MHC II) expression on tumor cells.

For Research Use Only

A Reliable Research Partner in Life Science and Medicine

Toll-free: 1-888-852-8623

Web: www.elabscience.com

Tel: 1-832-243-6086

Email: techsupport@elabscience.com

Fax: 1-832-243-6017