

PE/Cyanine5 Anti-Mouse Ig light chain λ Antibody[RML-42]

Catalog Number: AN00654G

Note: Centrifuge before opening to ensure complete recovery of vial contents.

Description

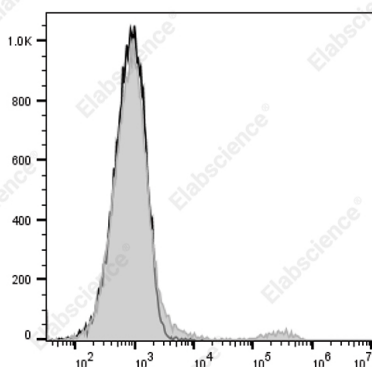
Reactivity	Mouse
Host	Rat
Isotype	Rat IgG2a, κ
Clone No.	RML-42
Isotype Control	PE/Cyanine5 Rat IgG2a, κ Isotype Control[2A3] [Product E-AB-F09832G]
Conjugation	PE/Cyanine 5
Conjugation Information	PE/Cyanine 5 is designed to be excited by the Blue (488 nm), Green (532 nm) and yellow-green (561 nm) lasers and detected using an optical filter centered near 670 nm (e.g., a 690/50 nm bandpass filter).
Storage Buffer	Phosphate buffered solution, pH 7.2, containing 0.09% stabilizer.

Applications

Recommended usage

FCM	Each lot of this antibody is quality control tested by flow cytometric analysis. The amount of the reagent is suggested to be used 5 μL of antibody per test (million cells in 100 μL staining volume or per 100 μL of whole blood). Please check your vial before the experiment. Since applications vary, the appropriate dilutions must be determined for individual use.
------------	--

Data



Staining of C57BL/6 murine splenocytes cells with PE/Cyanine 5 Anti-Mouse Ig light chain λ Antibody[RML-42] (filled gray histogram) or PE/Cyanine5 Rat IgG2a, κ Isotype Control (empty black histogram). Total viable cells were used for analysis.

Preparation & Storage

Storage	Keep as concentrated solution. This product can be stored at 2-8°C for 24 months. Please protected from prolonged exposure to light and do not freeze.
Shipping	Ice bag

Antigen Information

Alternate Names	Imunoglobulin light chain lambda;AN00654
Uniprot ID	\

For Research Use Only

Gene ID

111519

Background

The RML-42 monoclonal antibody reacts with immunoglobulin light chain lambda in all tested mouse haplotype (Igh-a and b). It does not react with kappa chain. The RML-42 monoclonal antibody may be used as primary or secondary reagent for ELISA or immunofluorescent analysis.