

## Elab Bright™ Violet 421 Anti-Mouse LY-6G Antibody[1A8]

Catalog Number: E-AB-F1108Q2

**Note:** Centrifuge before opening to ensure complete recovery of vial contents.

### Description

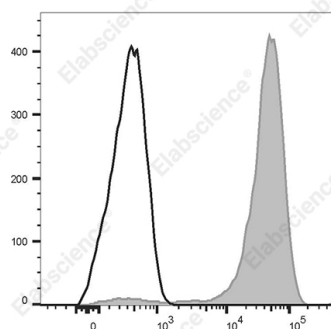
Reactivity	Mouse
Host	Rat
Isotype	Rat IgG2a, $\kappa$
Clone No.	1A8
Isotype Control	Elab Bright™ Violet 421 Rat IgG2a, $\kappa$ Isotype Control[R35-95] [Product AN00822Q2]
Conjugation	Elab Bright™ Violet 421
Conjugation Information	Elab Bright Violet 421 is designed to be excited by the violet laser (405 nm) and detected using an optical filter centered near 421 nm (e.g., a 450/50 nm bandpass filter).
Storage Buffer	Phosphate buffered solution, pH 7.2, containing 0.09% sodium azide and 1% BSA.

### Applications

### Recommended usage

FCM	Each lot of this antibody is quality control tested by flow cytometric analysis. <b>The amount of the reagent is suggested to be used 5 <math>\mu</math>L of antibody per test (million cells in 100 <math>\mu</math>L staining volume or per 100 <math>\mu</math>L of whole blood).</b> Please check your vial before the experiment. Since applications vary, the appropriate dilutions must be determined for individual use.
-----	----------------------------------------------------------------------------------------------------------------------------------------------------------------------------------------------------------------------------------------------------------------------------------------------------------------------------------------------------------------------------------------------------------------------------------

### Data



Staining of C57BL/6 murine splenocytes cells with Elab Bright Violet 421 Anti-Mouse Ly-6G Antibody[1A8] (filled gray histogram) or Elab Bright Violet 421 Rat IgG2a,  $\kappa$  Isotype Control (empty black histogram). Total viable cells were used for analysis.

### Preparation & Storage

Storage	Keep as concentrated solution. This product can be stored at 2-8°C for 12 months. Please protected from prolonged exposure to light and do not freeze.
Shipping	Ice bag

### Antigen Information

Alternate Names	Ly-6G;Ly-6G.1;Ly6g;Lymphocyte antigen 6G
Uniprot ID	P35461
Gene ID	546644

### For Research Use Only

## Background

Lymphocyte antigen 6 complex, locus G (Ly-6G), a 21-25 kD GPI-anchored protein, is expressed on the majority of myeloid cells in bone marrow and peripheral granulocytes