

Recombinant IFI30 Monoclonal Antibody

catalog number: **AN300259P**

Note: Centrifuge before opening to ensure complete recovery of vial contents.

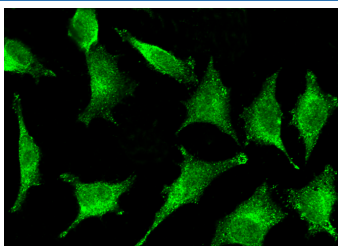
Description

Reactivity	Human
Immunogen	Recombinant Human IFI30 Protein
Host	Rabbit
Isotype	IgG
Clone	11A10
Purification	Protein A
Buffer	0.2 µm filtered solution in PBS

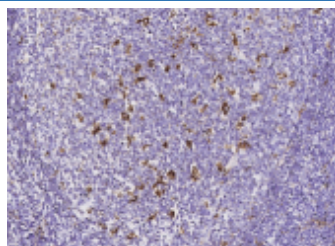
Applications Recommended Dilution

IHC-P	1:10000-1:20000
ICC/IF	1:20-1:100

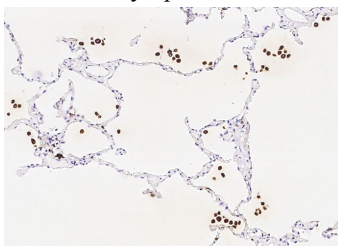
Data



Immunofluorescence analysis of IFI30 in Hela cells. Cells were fixed with 4% PFA, permeabilized with 0.1% Triton X-100 in PBS, blocked with 10% serum, and incubated with rabbit anti-IFI30 Monoclonal Antibody (dilution ratio 1:30) at 4°C overnight. Then cells were stained with the Alexa Fluor®488-conjugated Goat Anti-rabbit IgG secondary antibody (green). Positive staining was localized to Cytoplasm.



Immunohistochemistry of paraffin-embedded human tonsil using IFI30 Monoclonal Antibody at dilution of 1:20000.



Immunohistochemistry of paraffin-embedded human lung using IFI30 Monoclonal Antibody at dilution of 1:20000.

Preparation & Storage

Storage	This antibody can be stored at 2°C-8°C for one month without detectable loss of activity. Antibody products are stable for twelve months from date of receipt when stored at -20°C to -80°C. Preservative-Free. Avoid repeated freeze-thaw cycles.
Shipping	Ice bag

For Research Use Only

Background

The protein encoded by this gene is a lysosomal thiol reductase that at low pH can reduce protein disulfide bonds. The enzyme is expressed constitutively in antigen-presenting cells and induced by gamma-interferon in other cell types. This enzyme has an important role in MHC class II-restricted antigen processing.