

Recombinant Nucleophosmin Monoclonal Antibody

catalog number: **AN301122L**

Note: Centrifuge before opening to ensure complete recovery of vial contents.

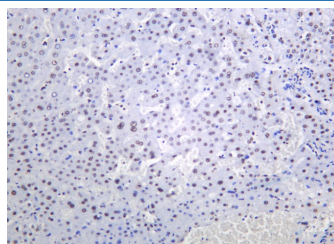
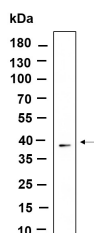
Description

Reactivity	Human;Mouse;Rat
Immunogen	Recombinant Human Nucleophosmin protein
Host	Rabbit
Isotype	IgG, κ
Clone	B877
Purification	Protein A
Buffer	PBS, 50% glycerol, 0.05% Proclin 300, 0.05% protein protectant.

Applications

Applications	Recommended Dilution
IHC	1:200-1:1000
WB	1:2000-1:10000
IF	1:200-1:1000
ELISA	1:5000-1:20000
IP	1:50-1:200

Data



Western Blot with Recombinant Nucleophosmin Monoclonal Antibody at dilution of 1:1000 dilution. Lane A: T47D lysate. Immunohistochemistry of paraffin-embedded human liver using Recombinant Nucleophosmin Monoclonal Antibody at dilution of 1:200.

Observed-MW:38 kDa
Calculated-MW:33 kDa

Preparation & Storage

Storage	Store at -20°C Valid for 12 months. Avoid freeze / thaw cycles.
Shipping	Ice bag

Background

This gene encodes a phosphoprotein which moves between the nucleus and the cytoplasm. The gene product is thought to be involved in several processes including regulation of the ARF/p53 pathway. A number of genes are fusion partners have been characterized, in particular the anaplastic lymphoma kinase gene on chromosome 2. Mutations in this gene are associated with acute myeloid leukemia. More than a dozen pseudogenes of this gene have been identified. Alternative splicing results in multiple transcript variants.

For Research Use Only