

Elab Fluor® 647 Anti-Human HLA-A2,B7 Antibody[BB7.6]

Catalog Number: AN00634M

Note: Centrifuge before opening to ensure complete recovery of vial contents.

Description

Reactivity	Human
Host	Mouse
Isotype	Mouse IgG1
Clone No.	BB7.6
Isotype Control	Elab Fluor® 647 Mouse IgG1, κ Isotype Control[MOPC-21] [Product E-AB-F09792M]
Conjugation	Elab Fluor® 647
Conjugation Information	Elab Fluor® 647 is designed to be excited by the Red laser (627-640 nm) and detected using an optical filter centered near 670 nm (e.g., a 660/20 nm bandpass filter).
Storage Buffer	Phosphate buffered solution, pH 7.2, containing 0.09% stabilizer and 1% protein protectant

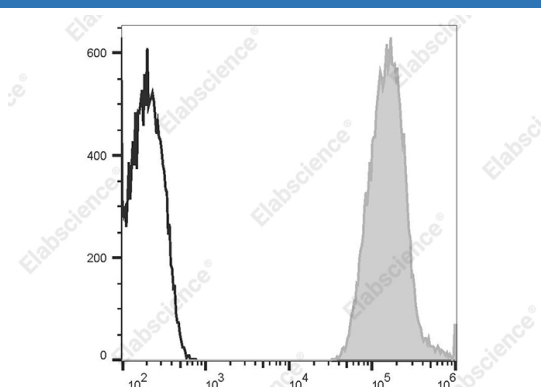
Applications

Recommended usage

FCM

Each lot of this antibody is quality control tested by flow cytometric analysis. **The amount of the reagent is suggested to be used 5 µL of antibody per test (million cells in 100 µL staining volume or per 100 µL of whole blood).** Please check your vial before the experiment. Since applications vary, the appropriate dilutions must be determined for individual use.

Data



Staining of normal human peripheral blood cells with Elab Fluor® 647 Anti-Human HLA-A2,B7 Antibody[BB7.6] (filled gray histogram) or Elab Fluor® 647 Mouse IgG1, κ Isotype Control (empty black histogram). Cells in the lymphocytes gate were used for analysis.

Preparation & Storage

Storage	Keep as concentrated solution. This product can be stored at 2-8°C for 12 months. Please protected from prolonged exposure to light and do not freeze.
Shipping	Ice bag

Antigen Information

Alternate Names	MHC-class I;HLA-B*07;HLA Class I histocompatibility antigen B alpha chain
Uniprot ID	P04439

For Research Use Only

Toll-free: 1-888-852-8623
Web: www.elabscience.com

Tel: 1-832-243-6086
Email: techsupport@elabscience.com

Fax: 1-832-243-6017

Rev. V1.6

Gene ID

3105

Background

HLA-A2 is most common in Northern Asia and North America populations. MHC class I antigens associated with β 2-microglobulin are expressed by all human nucleated cells. MHC class I molecules are involved in presentation of antigens to CD8+ T cells, playing an important role in cell-mediated immune responses and tumor surveillance. HLA-B belongs to the HLA class I heavy chain paralogues. HLA-B7 is a serotype of HLA-B and one of the common HLA types. MHC class I heavy chains associate with β 2-microglobulin and are expressed on nearly all nucleated cells. MHC class I molecules are involved in the presentation of antigens to CD8+ T cells and thereby play an important role in cell-mediated immune responses and immune surveillance.