

## ZG16 Polyclonal Antibody

catalog number: E-AB-53054

**Note:** Centrifuge before opening to ensure complete recovery of vial contents.

### Description

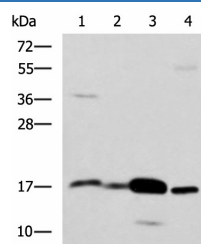
<b>Reactivity</b>	Human;Mouse
<b>Immunogen</b>	Fusion protein of human ZG16
<b>Host</b>	Rabbit
<b>Isotype</b>	IgG
<b>Purification</b>	Antigen affinity purification
<b>Conjugation</b>	Unconjugated
<b>Buffer</b>	Phosphate buffered solution, pH 7.4, containing 0.05% stabilizer and 50% glycerol.

### Applications

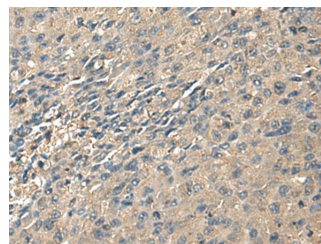
### Recommended Dilution

<b>WB</b>	1:1000-1:5000
<b>IHC</b>	1:100-1:300

### Data

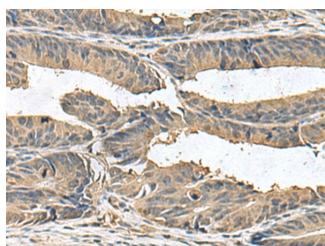


Western blot analysis of Mouse Pancreas tissue Mouse small intestines tissue Mouse large intestine tissue Human sigmoid tissue lysates using ZG16 Polyclonal Antibody at dilution of 1:1350



Immunohistochemistry of paraffin-embedded Human liver cancer tissue using ZG16 Polyclonal Antibody at dilution of 1:95(×200)

**Observed-MV:Refer to figures**  
**Calculated-MV:18 kDa**



Immunohistochemistry of paraffin-embedded Human colorectal cancer tissue using ZG16 Polyclonal Antibody at dilution of 1:95(×200)

### Preparation & Storage

<b>Storage</b>	Store at -20°C Valid for 12 months. Avoid freeze / thaw cycles.
<b>Shipping</b>	The product is shipped with ice pack,upon receipt,store it immediately at the temperature recommended.

### Background

### For Research Use Only

May play a role in protein trafficking. May act as a linker molecule between the submembranous matrix on the luminal side of zymogen granule membrane (ZGM) and aggregated secretory proteins during granule formation in the TGN.