

Recombinant PP1C beta Monoclonal Antibody

catalog number: **E-AB-81598**

Note: Centrifuge before opening to ensure complete recovery of vial contents.

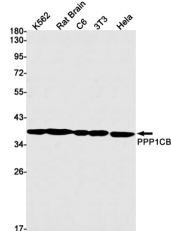
Description

Reactivity	Human;Mouse;Rat
Immunogen	A synthetic peptide of human PPP1CB
Host	Rabbit
Isotype	IgG
Clone	R09-6B7
Purification	Affinity Purified
Buffer	50mM Tris-Glycine(pH 7.4), 0.15M NaCl, 40% Glycerol, 0.05% stabilizer and 0.05% protective protein.

Applications

Applications	Recommended Dilution
WB	1:1000-1:3000
IHC	1:50-1:100
IF	1:50-1:100

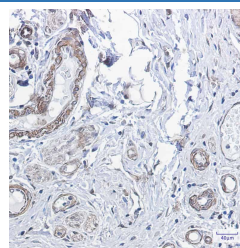
Data



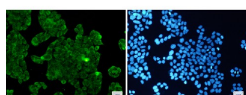
Western blot detection of PPP1CB in K562, Rat Brain, C6, 3T3, HeLa cell lysates using PPP1CB Rabbit mAb(1:1000 diluted). Predicted band size: 37kDa. Observed band size: 37kDa.

Observed-MW: 37 kDa

Calculated-MW: 37 kDa



Immunohistochemistry of PPP1CB in paraffin-embedded Human colon cancer tissue using PPP1CB Rabbit mAb at dilution 1:100



Immunofluorescence of PPP1CB(green) in HeLa cells using PPP1CB Rabbit mAb at dilution 1:50, and DAPI(blue)

Preparation & Storage

Storage	Store at -20°C Valid for 12 months. Avoid freeze / thaw cycles.
Shipping	The product is shipped with ice pack, upon receipt, store it immediately at the temperature recommended.

Background

For Research Use Only

The protein encoded by this gene is one of the three catalytic subunits of protein phosphatase 1 (PP1). PP1 is a serine/threonine specific protein phosphatase known to be involved in the regulation of a variety of cellular processes, such as cell division, glycogen metabolism, muscle contractility, protein synthesis, and HIV-1 viral transcription. Mouse studies suggest that PP1 functions as a suppressor of learning and memory. Two alternatively spliced transcript variants encoding distinct isoforms have been observed.

For Research Use Only

Toll-free: 1-888-852-8623
Web: www.elabscience.com

Tel: 1-832-243-6086
Email: techsupport@elabscience.com

Fax: 1-832-243-6017

Rev. V1.7