

## CEACAM21 Polyclonal Antibody

**catalog number:** E-AB-13996

**Note:** Centrifuge before opening to ensure complete recovery of vial contents.

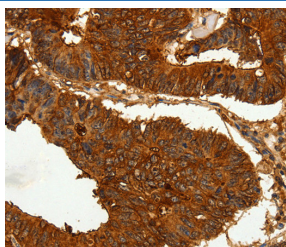
### Description

<b>Reactivity</b>	Human
<b>Immunogen</b>	Recombinant protein of human CEACAM21
<b>Host</b>	Rabbit
<b>Isotype</b>	IgG
<b>Purification</b>	Affinity purification
<b>Buffer</b>	Phosphate buffered solution, pH 7.4, containing 0.05% stabilizer and 50% glycerol.

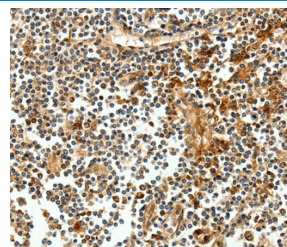
### Applications

Applications	Recommended Dilution
IHC	1:50-1:200

### Data



Immunohistochemistry of paraffin-embedded Human colon cancer tissue using CEACAM21 Polyclonal Antibody at dilution 1:60



Immunohistochemistry of paraffin-embedded Human tonsil tissue using CEACAM21 Polyclonal Antibody at dilution 1:60

### Preparation & Storage

<b>Storage</b>	Store at -20°C Valid for 12 months. Avoid freeze / thaw cycles.
<b>Shipping</b>	The product is shipped with ice pack, upon receipt, store it immediately at the temperature recommended.

### Background

CEACAM21 is a gene which encodes carcinoembryonic antigen. It belongs to the immunoglobulin superfamily-CEA family. Three isoforms of the human protein are produced by alternative splicing. High levels of expression in hematopoietic system, brain and muscle.

### For Research Use Only