

PE Anti-Human CD62L Antibody[DREG56]

Catalog Number: E-AB-F1051D

Note: Centrifuge before opening to ensure complete recovery of vial contents.

Description

Reactivity	Human
Host	Mouse
Isotype	Mouse IgG1, κ
Clone No.	DREG56
Isotype Control	PE Mouse IgG1, κ Isotype Control[MOPC-21] [Product E-AB-F09792D]
Conjugation	PE
Conjugation Information	PE is designed to be excited by the Blue (488 nm), Green (532 nm) and Yellow-Green (561 nm) lasers and detected using an optical filter centered near 575 nm (e.g., a 585/42 nm bandpass filter).
Storage Buffer	Phosphate buffered solution, pH 7.2, containing 0.09% stabilizer and 1% protein protectant.

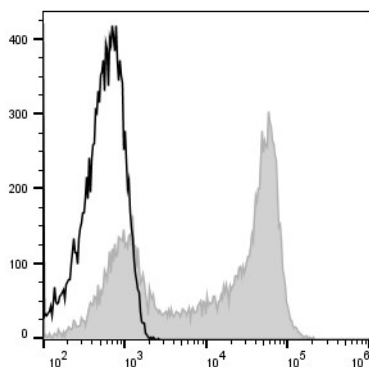
Applications

Recommended usage

FCM

Each lot of this antibody is quality control tested by flow cytometric analysis. **The amount of the reagent is suggested to be used 5 μL of antibody per test (million cells in 100 μL staining volume or per 100 μL of whole blood).** Please check your vial before the experiment. Since applications vary, the appropriate dilutions must be determined for individual use.

Data



Staining of normal human peripheral blood cells with PE Anti-Human CD62L Antibody[DREG56] (filled gray histogram) or PE Mouse IgG1, κ Isotype Control (empty black histogram). Cells in the lymphocytes gate were used for analysis.

Preparation & Storage

Storage

Keep as concentrated solution.

This product can be stored at 2-8°C for 12 months. Please protected from prolonged exposure to light and do not freeze.

Shipping

Ice bag

Antigen Information

Alternate Names

CD62L;CD62 antigen-like family member L;L-selectin;LAM-1;LECAM1;Lnhr;Ly-22;Ly22; Lymph node homing receptor;Sell

For Research Use Only

Uniprot ID

P14151

Gene ID

6402

Background

CD62L is a 74-95 kD single chain type I glycoprotein referred to as L-selectin or LECA M-1. It is expressed on most peripheral blood B cells, subsets of T and NK cells, monocytes, granulocytes, and certain hematopoietic malignant cells. CD62L binds to carbohydrates present on certain glycoforms of CD34, glycamin-1, and MAdCAM-1 and with a low affinity to anionic oligosaccharide sequences related to sialylated Lewis X (sLex, CD15s) through its C-type lectin domain. CD62L is important for the homing of naïve lymphocytes to high endothelial venules in peripheral lymph nodes and Peyer's patches. It also plays a role in leukocyte rolling on activated endothelial cells.

For Research Use Only

Toll-free: 1-888-852-8623
Web: www.elabscience.com

Tel: 1-832-243-6086
Email: techsupport@elabscience.com

Fax: 1-832-243-6017

Rev. V1.5