

# Recombinant Human GFRRA2 Protein (His Tag)

Catalog Number:PKSH033430



**Note:** Centrifuge before opening to ensure complete recovery of vial contents.

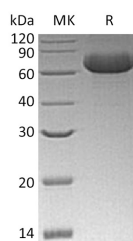
## Description

<b>Synonyms</b>	GDNF Family Receptor Alpha-2;GDNF Receptor Alpha-2;GDNFR-Alpha-2;GFR-Alpha-2;GDNF Receptor Beta;GDNFR-Beta;Neurturin Receptor Alpha;NRTNR-Alpha;NTNR-Alpha;RET Ligand 2;TGF-Beta-Related Neurotrophic Factor Receptor 2;GFRA2;GDNFRB;RETL2;TRNR2
<b>Species</b>	Human
<b>Expression Host</b>	HEK293 Cells
<b>Sequence</b>	Ser22-Ser441
<b>Accession</b>	O00451
<b>Calculated Molecular Weight</b>	47.8 kDa
<b>Observed molecular weight</b>	80 kDa
<b>Tag</b>	C-His

## Properties

<b>Purity</b>	> 95 % as determined by reducing SDS-PAGE.
<b>Endotoxin</b>	< 1.0 EU per µg of the protein as determined by the LAL method.
<b>Storage</b>	Generally, lyophilized proteins are stable for up to 12 months when stored at -20 to -80°C. Reconstituted protein solution can be stored at 4-8°C for 2-7 days. Aliquots of reconstituted samples are stable at < -20°C for 3 months.
<b>Shipping</b>	This product is provided as lyophilized powder which is shipped with ice packs.
<b>Formulation</b>	Lyophilized from a 0.2 µm filtered solution of 20mM PB, 150mM NaCl, pH 7.2. Normally 5 % - 8 % trehalose, mannitol and 0.01% Tween80 are added as protectants before lyophilization. Please refer to the specific buffer information in the printed man
<b>Reconstitution</b>	Please refer to the printed manual for detailed information.

## Data



> 95 % as determined by reducing SDS-PAGE.

## Background

Members of the glial cell line-derived neurotrophic factor (GDNF) family, including GDNF and Neurturin, play key roles in the control of vertebrate neuronal survival and differentiation. GDNF is a glycosylated, disulfide-bonded homodimer that is distantly related to the TGF superfamily of growth factors. Three receptors for these factors, GFR $\alpha$ -1, GFR $\alpha$ -2, and GFR $\alpha$ -3 have been identified. The receptors do not contain transmembrane domains and are attached to the cell membrane by glycosyl-phosphoinositol linkage. Both GFR $\alpha$ -1 and GFR $\alpha$ -2 have been shown to mediate the GDNF-

## For Research Use Only

A Reliable Research Partner in Life Science and Medicine

Toll-free: 1-888-852-8623

Tel: 1-832-243-6086

Fax: 1-832-243-6017

Web: [www.elabscience.com](http://www.elabscience.com)

Email: [techsupport@elabscience.com](mailto:techsupport@elabscience.com)

# Recombinant Human GFRRA2 Protein (His Tag)

Catalog Number:PKSH033430



dependent and Neurturin-dependent phosphorylation and activation of the tyrosine kinase Ret. GFR-3 is expressed only during development. GFR $\alpha$ -2 binds Neurturin and mediates activation of RET receptor tyrosine kinase by both Neurturin and GDNF.

---

## For Research Use Only

A Reliable Research Partner in Life Science and Medicine

Toll-free: 1-888-852-8623

Tel: 1-832-243-6086

Fax: 1-832-243-6017

Web: [www.elabscience.com](http://www.elabscience.com)

Email: [techsupport@elabscience.com](mailto:techsupport@elabscience.com)