

(KO Validated) TOM20 Polyclonal Antibody

catalog number: E-AB-66977

Note: Centrifuge before opening to ensure complete recovery of vial contents.

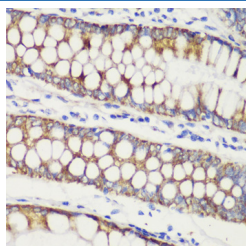
Description

Reactivity	Human;Mouse;Rat
Immunogen	Recombinant protein of human TOM20
Host	Rabbit
Isotype	IgG
Purification	Affinity purification
Buffer	Phosphate buffered solution, pH 7.4, containing 0.05% stabilizer and 50% glycerol.

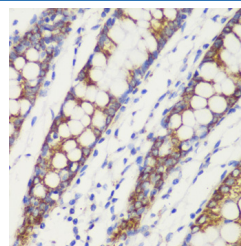
Applications Recommended Dilution

IHC	1:50-1:200
IF	1:50-1:200

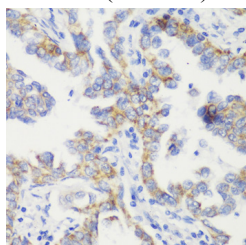
Data



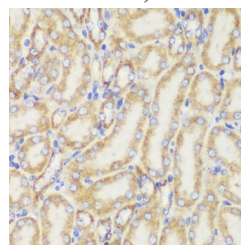
Immunohistochemistry of paraffin-embedded Human colon carcinoma using TOM20 Polyclonal Antibody at dilution of 1:100 (40x lens).



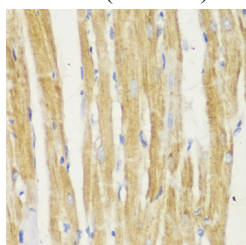
Immunohistochemistry of paraffin-embedded Human colon using TOM20 Polyclonal Antibody at dilution of 1:100 (40x lens).



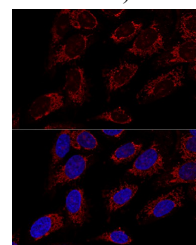
Immunohistochemistry of paraffin-embedded Human lung cancer using TOM20 Polyclonal Antibody at dilution of 1:100 (40x lens).



Immunohistochemistry of paraffin-embedded Mouse kidney using TOM20 Polyclonal Antibody at dilution of 1:100 (40x lens).

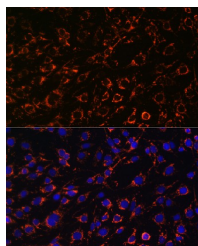


Immunohistochemistry of paraffin-embedded Rat heart using TOM20 Polyclonal Antibody at dilution of 1:100 (40x lens).

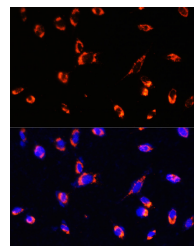


Confocal immunofluorescence analysis of U2OS cells using TOM20 Polyclonal Antibody at dilution of 1:100. Blue: DAPI for nuclear staining.

For Research Use Only



Immunofluorescence analysis of C6 cells using TOM20 Polyclonal Antibody at dilution of 1:100. Blue: DAPI for nuclear staining.



Immunofluorescence analysis of NIH/3T3 using TOM20 Polyclonal Antibody at dilution of 1:100. Blue: DAPI for nuclear staining.

Preparation & Storage

Storage

Store at -20°C Valid for 12 months. Avoid freeze / thaw cycles.

Shipping

The product is shipped with ice pack, upon receipt, store it immediately at the temperature recommended.

Background

TOMM20 (Translocase Of Outer Mitochondrial Membrane 20) is a Protein Coding gene. Diseases associated with TOMM20 include Optic Atrophy 11 and Muscular Dystrophy, Congenital, Megaconial Type. Among its related pathways are Neuroscience and Metabolism of proteins. Gene Ontology (GO) annotations related to this gene include unfolded protein binding and P-P-bond-hydrolysis-driven protein transmembrane transporter activity. An important paralog of this gene is TOMM20L.

For Research Use Only