

## Purified Anti-Human CD25 Antibody[BC96]

Catalog Number: GF11940P

**Note:** Centrifuge before opening to ensure complete recovery of vial contents.

### Description

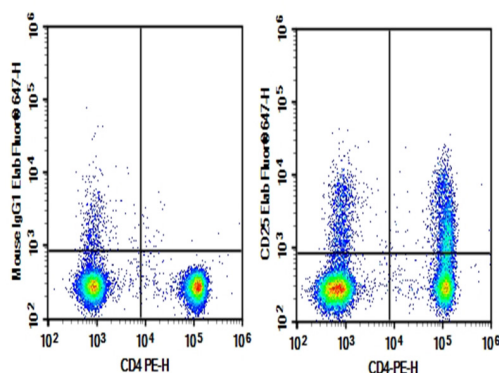
Reactivity	Human
Immunogen	Recombinant Human CD25 protein
Host	Mouse
Isotype	Mouse IgG1, κ
Clone	BC96
Purification	>98%, Protein A/G purified
Conjugation	Unconjugated
Buffer	Phosphate-buffered solution, pH 7.2, containing 0.05% non-protein stabilizer. Dialyze to completely remove the stabilizer prior to labeling.

### Applications

### Recommended Dilution

FCM	2 µg/mL (0.5×10 <sup>6</sup> -1×10 <sup>6</sup> cells)
-----	--

### Data



Human peripheral blood lymphocytes were stained with 0.2µg Purified Anti-Human CD25 Antibody[BC96] (Right) and 0.2µg mouse IgG1,κ Isotype Control (Left), followed by

Elab Fluor® 647-conjugated goat Anti-mouse IgG Secondary Antibody, then anti-human CD4 PE-conjugated Monoclonal Antibody.

### Preparation & Storage

Storage	Store at 4°C valid for 12 months or -20°C valid for long term storage, avoid freeze / thaw cycles.
Shipping	Ice bag

### Background

The interleukin 2 (IL2) receptor alpha (IL2RA) and beta (IL2RB) chains, together with the common gamma chain (IL2RG), constitute the high-affinity IL2 receptor. Homodimeric alpha chains (IL2RA) result in low-affinity receptor, while homodimeric beta (IL2RB) chains produce a medium-affinity receptor. Normally an integral-membrane protein, soluble IL2RA has been isolated and determined to result from extracellular proteolysis. Alternately-spliced IL2RA mRNAs have been isolated, but the significance of each is presently unknown. Mutations in this gene are associated with interleukin 2 receptor alpha deficiency.