

MMP9 Polyclonal Antibody

catalog number: **E-AB-93037**

Note: Centrifuge before opening to ensure complete recovery of vial contents.

Description

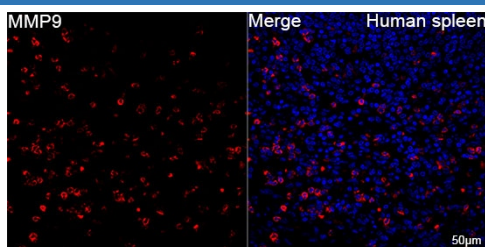
Reactivity	Human
Immunogen	Recombinant fusion protein of human MMP9
Host	Rabbit
Isotype	IgG
Purification	Affinity purification
Buffer	Phosphate buffered solution, pH 7.4, containing 0.05% stabilizer and 50% glycerol.

Applications

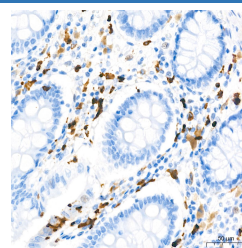
Recommended Dilution

IHC	1:50-1:200
IF	1:50-1:200

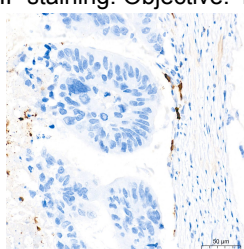
Data



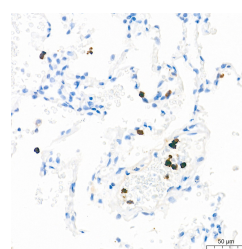
Confocal imaging of paraffin-embedded Human spleen tissue using MMP9 Rabbit pAb (A0289SP, dilution 1:300) followed by a further incubation with Cy3-conjugated Goat anti-Rabbit IgG (H+L) (AS007, dilution 1:500) (Red). DAPI was used for nuclear staining (Blue). High pressure antigen retrieval performed with 0.01M Citrate Buffer (pH 6.0) prior to IF staining. Objective: 40x.



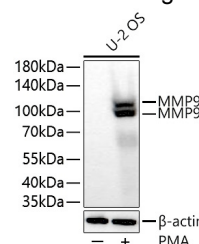
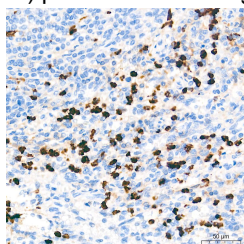
Immunohistochemistry analysis of paraffin-embedded Human colon tissue using MMP9 Rabbit pAb (A0289SP) at a dilution of 1:5000 (40x lens). High pressure antigen retrieval performed with 0.01M Tris-EDTA Buffer (pH 9.0) prior to IHC staining.



Immunohistochemistry analysis of paraffin-embedded Human colon carcinoma tissue using MMP9 Rabbit pAb (A0289SP) at a dilution of 1:5000 (40x lens). High pressure antigen retrieval performed with 0.01M Tris-EDTA Buffer (pH 9.0) prior to IHC staining.



Immunohistochemistry analysis of paraffin-embedded Human lung tissue using MMP9 Rabbit pAb (A0289SP) at a dilution of 1:5000 (40x lens). High pressure antigen retrieval performed with 0.01M Tris-EDTA Buffer (pH 9.0) prior to IHC staining.



For Research Use Only

Toll-free: 1-888-852-8623
Web: www.elabscience.com

Tel: 1-832-243-6086
Email: techsupport@elabscience.com

Fax: 1-832-243-6017

Rev. V1.7

Immunohistochemistry analysis of paraffin-embedded Human spleen tissue using MMP9 Rabbit pAb (A0289SP) at a dilution of 1:5000 (40x lens). High pressure antigen retrieval performed with 0.01M Tris-EDTA Buffer (pH 9.0) prior to IHC staining.

Western blot analysis of lysates from U-2 OS cells using MMP9 Rabbit pAb (A0289SP) at 1:5000 dilution incubated at room temperature for 1.5 hours. U-2 OS cells were treated with PMA (200 nM) at 37°C for 48 hours after serum-starvation overnight. | Secondary antibody: HRP-conjugated Goat anti-Rabbit IgG (H+L) (AS014) at 1:10000 dilution. | Lysates/proteins: 30 µg per lane. | Blocking buffer: 3% nonfat dry milk in TBST. | Detection: ECL Basic Kit (RM00020). |

Exposure time: 20 s.

Observed-MW:92 kDa

Calculated-MW:78 kDa

Preparation & Storage

Storage

Store at -20°C Valid for 12 months. Avoid freeze / thaw cycles.

Shipping

The product is shipped with ice pack, upon receipt, store it immediately at the temperature recommended.

Background

Proteins of the matrix metalloproteinase (MMP) family are involved in the breakdown of extracellular matrix in normal physiological processes, such as embryonic development, reproduction, and tissue remodeling, as well as in disease processes, such as arthritis and metastasis. Most MMP's are secreted as inactive proproteins which are activated when cleaved by extracellular proteinases. The enzyme encoded by this gene degrades type IV and V collagens. Studies in rhesus monkeys suggest that the enzyme is involved in IL-8-induced mobilization of hematopoietic progenitor cells from bone marrow, and murine studies suggest a role in tumor-associated tissue remodeling.

For Research Use Only