

LIG1 Polyclonal Antibody

Catalog Number: E-AB-60480

1 Publications



Note: Centrifuge before opening to ensure complete recovery of vial contents.

Description

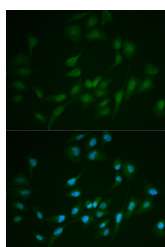
Reactivity	Human, Mouse
Immunogen	Recombinant fusion protein of human LIG1 (NP_000225.1).
Host	Rabbit
Isotype	IgG
Purification	Affinity purification
Conjugation	Unconjugated
Formulation	PBS with 0.02% sodium azide, 50% glycerol, pH7.3.

Applications

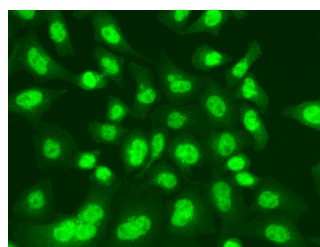
Recommended Dilution

IF	1:50-1:200
-----------	------------

Data



Immunofluorescence analysis of MCF-7 cells using LIG1 Polyclonal Antibody



Immunofluorescence analysis of A549 cells using LIG1 Polyclonal Antibody

Preparation & Storage

Storage Store at -20°C. Avoid freeze / thaw cycles.

Background

This gene encodes a member of the ATP-dependent DNA ligase protein family. The encoded protein functions in DNA replication, recombination, and the base excision repair process. Mutations in this gene that lead to DNA ligase I deficiency result in immunodeficiency and increased sensitivity to DNA-damaging agents. Disruption of this gene may also be associated with a variety of cancers. Alternative splicing results in multiple transcript variants.

For Research Use Only

A Reliable Research Partner in Life Science and Medicine

Toll-free: 1-888-852-8623

Web: www.elabscience.com

Tel: 1-832-243-6086

Email: techsupport@elabscience.com

Fax: 1-832-243-6017