

Recombinant Human MDP1 Protein (His Tag)

Catalog Number:PKSH032728



Note: Centrifuge before opening to ensure complete recovery of vial contents.

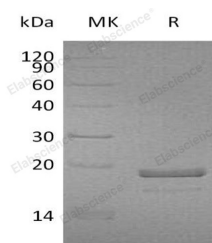
Description

Synonyms	Magnesium-dependent phosphatase 1;MDP-1;EC=3.1.3.48;
Species	Human
Expression Host	HEK293 Cells
Sequence	Met 1-Ala176
Accession	Q86V88
Calculated Molecular Weight	21.1 kDa
Observed molecular weight	18 kDa
Tag	C-His

Properties

Purity	> 95 % as determined by reducing SDS-PAGE.
Endotoxin	< 1.0 EU per µg of the protein as determined by the LAL method.
Storage	Store at < -20°C, stable for 6 months. Please minimize freeze-thaw cycles.
Shipping	This product is provided as liquid. It is shipped at frozen temperature with blue ice/gel packs. Upon receipt, store it immediately at < - 20°C.
Formulation	Supplied as a 0.2 µm filtered solution of 20mM Tris-HCl, 150mM NaCl, 10% Glycerol, pH 7.5.
Reconstitution	Not Applicable

Data



> 95 % as determined by reducing SDS-PAGE.

Background

MDP1, which is short for magnesium-dependent phosphatase 1, is a 176 aa. protein. It has 3 forms by different alternative splicing. This protein belongs to the HAD-like hydrolase superfamily, and usually takes its function with Magnesium. It can be inhibited by vanadate and zinc, and slightly by calcium. MDP1 is a Magnesium-dependent phosphatase which may act as a tyrosine phosphatase.

For Research Use Only

A Reliable Research Partner in Life Science and Medicine

Toll-free: 1-888-852-8623

Web: www.elabscience.com

Tel: 1-832-243-6086

Email: techsupport@elabscience.com

Fax: 1-832-243-6017