

PKM Polyclonal Antibody

catalog number: E-AB-10004

Note: Centrifuge before opening to ensure complete recovery of vial contents.

Description

Reactivity	Human;Mouse;Rat
Immunogen	Recombinant protein of human PKM2
Host	Rabbit
Isotype	IgG
Purification	Affinity purification
Conjugation	Unconjugated
buffer	Phosphate buffered solution, pH 7.4, containing 0.05% stabilizer and 50% glycerol.

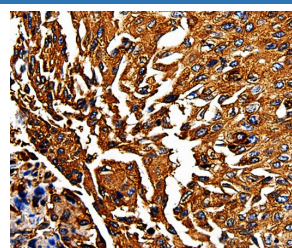
Applications

Applications	Recommended Dilution
WB	1:500-1:2000
IHC	1:50-1:200

Data



Western Blot analysis of Hela cell using PKM Polyclonal Antibody at dilution of 1:500
Calculated-MV:58 kDa



Immunohistochemistry of paraffin-embedded Human lung cancer using PKM Polyclonal Antibody at dilution of 1:50

Preparation & Storage

Storage	Store at -20°C Valid for 12 months. Avoid freeze / thaw cycles.
Shipping	The product is shipped with ice pack, upon receipt, store it immediately at the temperature recommended.

Background

This gene encodes a protein involved in glycolysis. The encoded protein is a pyruvate kinase that catalyzes the transfer of a phosphoryl group from phosphoenolpyruvate to ADP, generating ATP and Stimulates POU5F1-mediated transcriptional activation. Plays a general role in caspase independent cell death of tumor cells. This protein has been shown to interact with thyroid hormone and may mediate cellular metabolic effects induced by thyroid hormones. This protein has been found to bind Opa protein, a bacterial outer membrane protein involved in gonococcal adherence to and invasion of human cells, suggesting a role of this protein in bacterial pathogenesis.

For Research Use Only