

Recombinant Human CXCL12/SDF-1 Protein (aa19-93)



DIA • AN[®]
by Elabscience

Catalog Number: PKSH032294

Note: Centrifuge before opening to ensure complete recovery of vial contents.

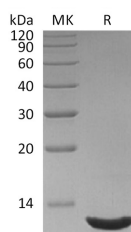
Description

Synonyms	Stromal Cell-Derived Factor 1;SDF-1;hSDF-1;C-X-C Motif Chemokine 12;Intercrine Reduced in Hepatomas;IRH;hIRH;Pre-B Cell Growth-Stimulating Factor;PBSF;CXCL12;SDF1;SDF1A;SDF1B
Species	Human
Expression Host	E.coli
Sequence	Ser19-Met93
Accession	P48061
Calculated Molecular Weight	8.8 kDa
Observed molecular weight	12 kDa
Tag	None

Properties

Purity	> 95 % as determined by reducing SDS-PAGE.
Endotoxin	< 1.0 EU per µg of the protein as determined by the LAL method.
Storage	Generally, lyophilized proteins are stable for up to 12 months when stored at -20 to -80°C. Reconstituted protein solution can be stored at 4-8°C for 2-7 days. Aliquots of reconstituted samples are stable at < -20°C for 3 months.
Shipping	This product is provided as lyophilized powder which is shipped with ice packs.
Formulation	Lyophilized from a 0.2 µm filtered solution of PBS, pH 7.4. Normally 5 % - 8 % trehalose, mannitol and 0.01 % Tween80 are added as protectants before lyophilization. Please refer to the specific buffer information in the printed manual.
Reconstitution	Please refer to the printed manual for detailed information.

Data



> 95 % as determined by reducing SDS-PAGE.

Background

Stromal Cell-Derived Factor-1 (SDF-1) is a chemokine member of the intercrine family. SDF1 is expressed as five isoforms that differ only in the C terminal tail. SDF1 α and SDF1 β are identical except for the four residues present in the C-terminus of SDF1 β but absent from SDF1 α . SDF1 isoforms interact with CXCR4 and CXCR7 receptors on the cell surface; and can also bind syndecan4. SDF1 is known to influence lymphopoiesis; regulate patterning and cell number of neural progenitors; and promote angiogenesis. It also enhances the survival of myeloid progenitor cells.

For Research Use Only

A Reliable Research Partner in Life Science and Medicine

Toll-free: 1-888-852-8623

Web: www.elabscience.com

Tel: 1-832-243-6086

Email: techsupport@elabscience.com

Fax: 1-832-243-6017