

Recombinant Catalase Monoclonal Antibody

catalog number: **AN301085L**

Note: Centrifuge before opening to ensure complete recovery of vial contents.

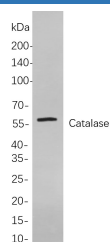
Description

| | |
|---------------------|---|
| Reactivity | Human;Mouse;Rat |
| Immunogen | Recombinant Human Catalase protein |
| Host | Rabbit |
| Isotype | IgG, κ |
| Clone | B840 |
| Purification | Protein A |
| Buffer | PBS, 50% glycerol, 0.05% Proclin 300, 0.05% protein protectant. |

Applications

| Applications | Recommended Dilution |
|--------------|----------------------|
| IHC | 1:200-1000 |
| WB | 1:1000-5000 |
| IF | 1:200-1000 |
| ELISA | 1:5000-20000 |

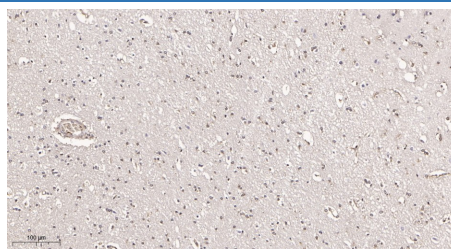
Data



Western Blot with Recombinant Catalase Monoclonal Antibody at dilution of 1:1000 dilution. Lane A: Hela cells.

Observed-MW:60 kDa

Calculated-MW:60 kDa



Immunohistochemistry of paraffin-embedded human brain tissue using Recombinant Catalase Monoclonal Antibody at dilution of 1:200.

Preparation & Storage

| | |
|-----------------|---|
| Storage | Store at -20°C Valid for 12 months. Avoid freeze / thaw cycles. |
| Shipping | Ice bag |

Background

This gene encodes catalase, a key antioxidant enzyme in the bodies defense against oxidative stress. Catalase is a heme enzyme that is present in the peroxisome of nearly all aerobic cells. Catalase converts the reactive oxygen species hydrogen peroxide to water and oxygen and thereby mitigates the toxic effects of hydrogen peroxide. Oxidative stress is hypothesized to play a role in the development of many chronic or late-onset diseases such as diabetes, asthma, Alzheimer's disease, systemic lupus erythematosus, rheumatoid arthritis, and cancers. Polymorphisms in this gene have been associated with decreases in catalase activity but, to date, acatalasemia is the only disease known to be caused by this gene.

For Research Use Only