

## Recombinant Mouse FSTL1 Protein (Fc Tag)

**Catalog Number:** PKSM041026

**Note:** *Centrifuge before opening to ensure complete recovery of vial contents.*

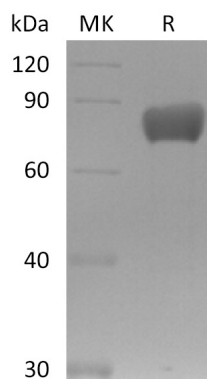
### Description

<b>Species</b>	Mouse
<b>Source</b>	HEK293 Cells-derived Mouse FSTL1 protein Glu19-Ile306, with an C-terminal Fc
<b>Calculated MW</b>	59.6 kDa
<b>Observed MW</b>	70-85 kDa
<b>Accession</b>	Q62356
<b>Bio-activity</b>	Not validated for activity

### Properties

<b>Purity</b>	> 95 % as determined by reducing SDS-PAGE.
<b>Endotoxin</b>	< 1.0 EU per µg of the protein as determined by the LAL method.
<b>Storage</b>	Generally, lyophilized proteins are stable for up to 12 months when stored at -20 to -80°C. Reconstituted protein solution can be stored at 4-8°C for 2-7 days. Aliquots of reconstituted samples are stable at < -20°C for 3 months.
<b>Shipping</b>	This product is provided as lyophilized powder which is shipped with ice packs.
<b>Formulation</b>	Lyophilized from a 0.2 µm filtered solution of PBS, pH 7.4. Normally 5% - 8% trehalose, mannitol and 0.01% Tween 80 are added as protectants before lyophilization.
<b>Reconstitution</b>	Please refer to the specific buffer information in the printed manual. Please refer to the printed manual for detailed information.

### Data



### Background

Follistatin-like 1 (FSTL1) is a secreted glycoprotein that has been grouped into the follistatin family of proteins. FSTL1 is composed of a follistatin domain and two non-functional calcium-binding motifs. It was originally cloned as a TGFβ 1 inducible factor but subsequently shown to regulate diverse developmental pathways and tissue homeostasis. Ablation of the FSTL1 gene in the mouse results in several structural developmental defects and neonatal lethality due to respiratory failure. FSTL1 suppresses BMP signaling, but the precise mechanism of its action has not been elucidated. FSTL1 is expressed in the human placenta, mainly in extravillous trophoblasts.

### For Research Use Only