

## SLC38A1 Polyclonal Antibody

catalog number: **E-AB-92310**

**Note:** Centrifuge before opening to ensure complete recovery of vial contents.

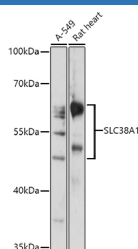
### Description

<b>Reactivity</b>	Human;Rat
<b>Immunogen</b>	Recombinant fusion protein of human SLC38A1
<b>Host</b>	Rabbit
<b>Isotype</b>	IgG
<b>Purification</b>	Affinity purification
<b>Buffer</b>	Phosphate buffered solution, pH 7.4, containing 0.05% stabilizer and 50% glycerol.

### Applications

<b>WB</b>	1:500-1:2000
-----------	--------------

### Data



Western blot analysis of extracts of various cell lines using SLC38A1 Polyclonal Antibody at 1:1000 dilution.

**Observed-MV:50-70 kDa**

**Calculated-MV:54 kDa**

### Preparation & Storage

<b>Storage</b>	Store at -20°C Valid for 12 months. Avoid freeze / thaw cycles.
<b>Shipping</b>	The product is shipped with ice pack,upon receipt,store it immediately at the temperature recommended.

### Background

Amino acid transporters play essential roles in the uptake of nutrients, production of energy, chemical metabolism, detoxification, and neurotransmitter cycling. SLC38A1 is an important transporter of glutamine, an intermediate in the detoxification of ammonia and the production of urea. Glutamine serves as a precursor for the synaptic transmitter, glutamate (Gu et al., 2001 [PubMed 11325958]).

### For Research Use Only