

CSTF2T Polyclonal Antibody

catalog number: **E-AB-63795**

Note: Centrifuge before opening to ensure complete recovery of vial contents.

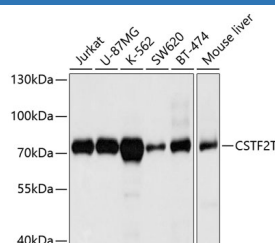
Description

Reactivity	Human;Mouse
Immunogen	Recombinant fusion protein of human CSTF2T (NP_056050.1).
Host	Rabbit
Isotype	IgG
Purification	Affinity purification
Buffer	Phosphate buffered solution, pH 7.4, containing 0.05% stabilizer and 50% glycerol.

Applications

WB	1:1000-1:2000
-----------	---------------

Data



Western blot analysis of extracts of various cell lines using CSTF2T Polyclonal Antibody at dilution of 1:1000.

Observed-MW:70 kDa

Calculated-MW:64 kDa

Preparation & Storage

Storage	Store at -20°C Valid for 12 months. Avoid freeze / thaw cycles.
Shipping	The product is shipped with ice pack, upon receipt, store it immediately at the temperature recommended.

Background

CSTF2T (Cleavage Stimulation Factor Subunit 2 Tau Variant) is a Protein Coding gene. Diseases associated with CSTF2T include Oligoasthenoteratozoospermia. Among its related pathways are Cleavage of Growing Transcript in the Termination Region and Gene Expression. Gene Ontology (GO) annotations related to this gene include nucleic acid binding and RNA binding. An important paralog of this gene is CSTF2.

For Research Use Only