

## EPS15 Polyclonal Antibody

**catalog number: E-AB-17923**

**Note:** Centrifuge before opening to ensure complete recovery of vial contents.

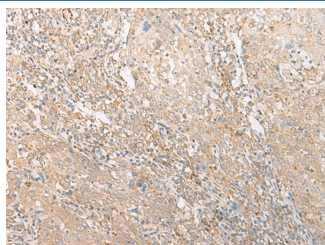
### Description

<b>Reactivity</b>	Human;Mouse
<b>Immunogen</b>	Synthetic peptide of human EPS15
<b>Host</b>	Rabbit
<b>Isotype</b>	IgG
<b>Purification</b>	Antigen affinity purification
<b>Buffer</b>	Phosphate buffered solution, pH 7.4, containing 0.05% stabilizer and 50% glycerol.

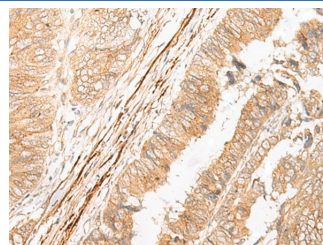
### Applications

Applications	Recommended Dilution
IHC	1:50-1:300

### Data



Immunohistochemistry of paraffin-embedded Human cervical cancer tissue using EPS15 Polyclonal Antibody at dilution of 1:50(×200)



Immunohistochemistry of paraffin-embedded Human colorectal cancer tissue using EPS15 Polyclonal Antibody at dilution of 1:50(×200)

### Preparation & Storage

<b>Storage</b>	Store at -20°C Valid for 12 months. Avoid freeze / thaw cycles.
<b>Shipping</b>	The product is shipped with ice pack, upon receipt, store it immediately at the temperature recommended.

### Background

This gene encodes a protein that is part of the EGFR pathway. The protein is present at clathrin-coated pits and is involved in receptor-mediated endocytosis of EGF. Notably, this gene is rearranged with the HRX/ALL/MLL gene in acute myelogenous leukemias. Alternative splicing results in multiple transcript variants encoding distinct isoforms. EPS15 (Epidermal Growth Factor Receptor Pathway Substrate 15) is a Protein Coding gene. Diseases associated with EPS15 include Vaccinia. Among its related pathways are Notch signaling pathway (KEGG) and HIV Life Cycle. GO annotations related to this gene include calcium ion binding and SH3 domain binding. An important paralog of this gene is EPS15L1.

### For Research Use Only