

## Recombinant Human G6PD protein (His Tag)

**Catalog Number:** PDEH100814

**Note:** Centrifuge before opening to ensure complete recovery of vial contents.

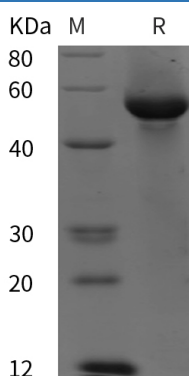
### Description

<b>Species</b>	Human
<b>Source</b>	E.coli-derived Human G6PD protein Met1-Leu515, with an N-terminal His
<b>Calculated MW</b>	56.5 kDa
<b>Observed MW</b>	55 kDa
<b>Accession</b>	P11413
<b>Bio-activity</b>	Not validated for activity

### Properties

<b>Purity</b>	> 95% as determined by reducing SDS-PAGE.
<b>Endotoxin</b>	< 10 EU/mg of the protein as determined by the LAL method
<b>Storage</b>	Generally, lyophilized proteins are stable for up to 12 months when stored at -20 to -80 °C. Reconstituted protein solution can be stored at 4-8°C for 2-7 days. Aliquots of reconstituted samples are stable at < -20°C for 3 months.
<b>Shipping</b>	This product is provided as lyophilized powder which is shipped with ice packs.
<b>Formulation</b>	Lyophilized from a 0.2 µm filtered solution in PBS with 5% Trehalose and 5% Mannitol.
<b>Reconstitution</b>	It is recommended that sterile water be added to the vial to prepare a stock solution of 0.5 mg/mL. Concentration is measured by UV-Vis.

### Data



> 95 % as determined by reducing SDS-PAGE.

### Background

Glucose-6-Phosphate 1-Dehydrogenase (G6PD) is a cytosolic enzyme that belongs to the glucose-6-phosphate dehydrogenase family. G6PD participates in the pentose phosphate pathway that supplies reducing energy to cells by maintaining the level of the co-enzyme nicotinamide adenine dinucleotide phosphate (NADPH). G6PD produces pentose sugars for nucleic acid synthesis and main producer of NADPH reducing power. NADPH in turn maintains the level of glutathione in these cells that helps protect the red blood cells against oxidative damage. It is notable in humans that G6PD is remarkable for its genetic diversity. G6PD deficiency may cause neonatal jaundice, acute hemolysis, or severe chronic non-spherocytic hemolytic anemia.

### For Research Use Only