

Elab Fluor® 700 Anti-Human CD56/NCAM Antibody[B-A19]

Catalog Number: E-AB-F1305M1

Note: Centrifuge before opening to ensure complete recovery of vial contents.

Description

| | |
|-------------------------|--|
| Reactivity | Human |
| Host | Mouse |
| Isotype | Mouse IgG1, κ |
| Clone No. | B-A19 |
| Isotype Control | Elab Fluor® 700 Mouse IgG1, κ Isotype Control[MOPC-21] [Product E-AB-F09792M1] |
| Conjugation | Elab Fluor® 700 |
| Conjugation Information | Elab Fluor® 700 is designed to be excited by the Red laser (627-640 nm) and detected using an optical filter centered near 719 nm (e.g., a 725/40 nm bandpass filter). |
| Storage Buffer | Phosphate buffered solution, pH 7.2, containing 0.09% sodium azide and 1% BSA. |

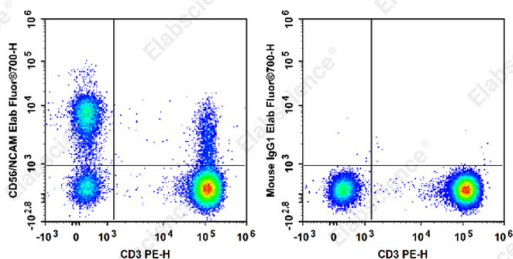
Applications

Recommended usage

FCM

Each lot of this antibody is quality control tested by flow cytometric analysis. **The amount of the reagent is suggested to be used 5 μL of antibody per test (million cells in 100 μL staining volume or per 100 μL of whole blood).** Please check your vial before the experiment. Since applications vary, the appropriate dilutions must be determined for individual use.

Data



Staining of normal human peripheral blood cells with PE

Anti-Human CD3 Antibody[OKT-3] and Elab Fluor® 700 Anti-Human CD56/NCAM Antibody[B-A19] (left) or Elab Fluor® 700 Mouse IgG1, κ Isotype Control (right). Cells in the lymphocytes gate were used for analysis.

Preparation & Storage

| | |
|----------|---|
| Storage | Keep as concentrated solution. This product can be stored at 2-8°C for 12 months. Please protected from prolonged exposure to light and do not freeze. |
| Shipping | Ice bag |

Antigen Information

| | |
|-----------------|---|
| Alternate Names | N-CAM-1;NCAM;NCAM-1;NCAM1;Neural cell adhesion molecule 1 |
| Uniprot ID | P51677 |
| Gene ID | 4684 |

For Research Use Only

Background

CD56 is a single transmembrane glycoprotein also known as NCAM (neural cell adhesion molecule), Leu-19, or NKH1. It is a member of the Ig superfamily. The 140 kD isoform is expressed on NK and NKT cells. CD56 is also expressed in the brain (cerebellum and cortex) and at neuromuscular junctions. Certain large granular lymphocyte (LGL) leukemias, small-cell lung carcinomas, neuronal derived tumors, myelomas, and myeloid leukemias also express CD56. CD56 plays a role in homophilic and heterophilic adhesion via binding to itself or heparan sulfate.