

Purified Anti-Human CD42a Antibody[ALMA.16]

Catalog Number: GF007950P

Note: Centrifuge before opening to ensure complete recovery of vial contents.

Description

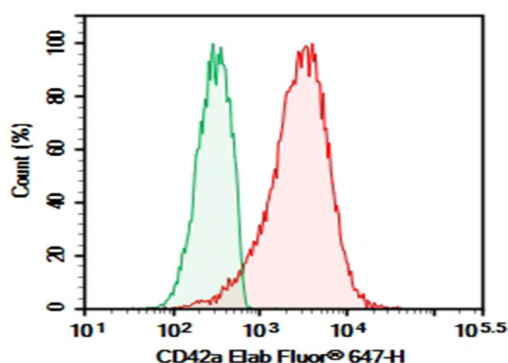
Reactivity	Human
Immunogen	Recombinant Human CD42a protein
Host	Mouse
Isotype	Mouse IgG1, κ
Clone	ALMA.16
Purification	>98%, Protein A/G purified
Conjugation	Unconjugated
Buffer	PBS, pH 7.2. Contains 0.05% proclin 300.

Applications

Recommended Dilution

FCM	2 μ g/mL (0.5 \times 10 ⁶ -1 \times 10 ⁶ cells)
------------	-------------------------------------------------------------------------------

Data



Human peripheral blood platelet cell were stained with 0.2 μ g Purified Anti-Human CD42a Antibody[ALMA.16] (Right) and 0.2 μ g Mouse IgG1, κ Isotype Control (Left), followed by Elab Fluor® 647-conjugated Goat Anti-Mouse IgG Secondary Antibody.

Preparation & Storage

Storage	Store at 4°C valid for 12 months or -20°C valid for long term storage, avoid freeze / thaw cycles.
Shipping	Ice bag

Background

This gene encodes a small membrane glycoprotein found on the surface of Human platelets. It forms a 1-to-1 noncovalent complex with glycoprotein Ib, a platelet surface membrane glycoprotein complex that functions as a receptor for von Willebrand factor. The complete receptor complex includes noncovalent association of the alpha and beta subunits with the protein encoded by this gene and platelet glycoprotein V. Defects in this gene are a cause of Bernard-Soulier syndrome, also known as giant platelet disease. These patients have unusually large platelets and have a clinical bleeding tendency.