

Recombinant Human SETD7/SET7/9 Protein (His Tag)



Catalog Number: PKSH031208

Note: Centrifuge before opening to ensure complete recovery of vial contents.

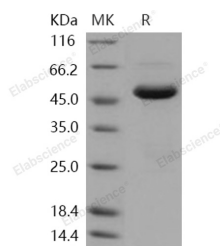
Description

Synonyms	KMT7;SET7;SET7/9;SET9
Species	Human
Expression Host	E.coli
Sequence	Asp 2-Lys 366
Accession	NP_085151.1
Calculated Molecular Weight	41.5 kDa
Observed molecular weight	48 kDa
Tag	N-His

Properties

Purity	> 94 % as determined by reducing SDS-PAGE.
Endotoxin	Please contact us for more information.
Storage	Generally, lyophilized proteins are stable for up to 12 months when stored at -20 to -80°C. Reconstituted protein solution can be stored at 4-8°C for 2-7 days. Aliquots of reconstituted samples are stable at < -20°C for 3 months.
Shipping	This product is provided as lyophilized powder which is shipped with ice packs.
Formulation	Lyophilized from sterile PBS, pH 7.4 Normally 5 % - 8 % trehalose, mannitol and 0.01 % Tween80 are added as protectants before lyophilization. Please refer to the specific buffer information in the printed manual.
Reconstitution	Please refer to the printed manual for detailed information.

Data



> 94 % as determined by reducing SDS-PAGE.

Background

Histone-lysine N-methyltransferase SETD7, also known as SET domain containing (lysine methyltransferase) 7, SET7/9, Histone H3-K4 methyltransferase SETD7, H3-K4-HMTase SETD7, and SETD7, is a member of the histone-lysine methyltransferase family and SET7 subfamily. SETD7 is widely expressed and expressed in pancreatic islets. SETD7 contains three MORN repeats and one SET domain. SETD7 plays a central role in the transcriptional activation of genes such as collagenase or insulin. As a protein lysine methyltransferase (PKMT), SETD7 also has methyltransferase activity toward non-histone proteins such as p53/TP53, TAF10, and possibly TAF7 by recognizing and binding in substrate proteins. The mono-methyltransferase activity of SETD7 is achieved by disrupting the formation at near-attack conformations for the dimethylation reaction. SETD7 is also a novel coactivator of NF-kappaB and plays a role in

For Research Use Only

A Reliable Research Partner in Life Science and Medicine

Toll-free: 1-888-852-8623

Web: www.elabscience.com

Tel: 1-832-243-6086

Email: techsupport@elabscience.com

Fax: 1-832-243-6017

Recombinant Human SETD7/SET7/9 Protein (His Tag)

Catalog Number:PKSH031208



inflammation and diabetes.

For Research Use Only

A Reliable Research Partner in Life Science and Medicine

Toll-free: 1-888-852-8623

Tel: 1-832-243-6086

Fax: 1-832-243-6017

Web: www.elabscience.com

Email: techsupport@elabscience.com