

Recombinant Human SULT1B1 Protein (His Tag)

Catalog Number:PKSH033361



Note: Centrifuge before opening to ensure complete recovery of vial contents.

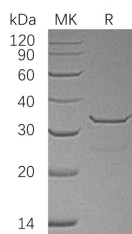
Description

Synonyms	Sulfotransferase Family Cytosolic 1B Member 1;ST1B1;Sulfotransferase 1B1;Sulfotransferase 1B2;ST1B2;Thyroid Hormone Sulfotransferase;SULT1B1;ST1B2;SULT1B2
Species	Human
Expression Host	E.coli
Sequence	Met 1-Ile296
Accession	AAH10895.1
Calculated Molecular Weight	36.3 kDa
Observed molecular weight	28-35 kDa
Tag	N-His

Properties

Purity	> 95 % as determined by reducing SDS-PAGE.
Endotoxin	< 1.0 EU per µg of the protein as determined by the LAL method.
Storage	Store at < -20°C, stable for 6 months. Please minimize freeze-thaw cycles.
Shipping	This product is provided as liquid. It is shipped at frozen temperature with blue ice/gel packs. Upon receipt, store it immediately at < - 20°C.
Formulation	Supplied as a 0.2 µm filtered solution of 20mM Tris-HCl, 100mM NaCl, pH 8.0.
Reconstitution	Not Applicable

Data



> 95 % as determined by reducing SDS-PAGE.

Background

Sulfotransferase Family Cytosolic 1B Member 1 (SULT1B1) is a cytosolic enzyme that belongs to the Sulfotransferase 1 family. Human SULT1B1 is a 296 amino acid protein that is highly expressed in the liver; peripheral blood leukocytes; colon; small intestine; and spleen. SULT1B1 utilizes 3'-phospho-5'-adenylyl sulfate (PAPS) as sulfonate donor; and it can catalyze the sulfate conjugation of many hormones; neurotransmitters; drugs; and xenobiotic compounds.

For Research Use Only

A Reliable Research Partner in Life Science and Medicine

Toll-free: 1-888-852-8623

Web: www.elabscience.com

Tel: 1-832-243-6086

Email: techsupport@elabscience.com

Fax: 1-832-243-6017