

## Recombinant Phospho-PDPK1 (Ser241) Monoclonal Antibody

catalog number: **AN301308L**

**Note:** Centrifuge before opening to ensure complete recovery of vial contents.

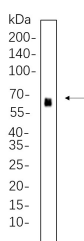
### Description

<b>Reactivity</b>	Human;Mouse;Rat
<b>Immunogen</b>	A synthetic peptide corresponding to residues around (Ser241) of Human Phospho-PDPK1
<b>Host</b>	Rabbit
<b>Isotype</b>	IgG,k
<b>Clone</b>	7C9
<b>Purification</b>	Protein A
<b>Buffer</b>	PBS, 50% glycerol, 0.05% Proclin 300, 0.05% protein protectant.

### Applications Recommended Dilution

<b>WB</b>	1:2000-1:10000
-----------	----------------

### Data



Western Blot with Recombinant Phospho-PDPK1 (Ser241)

Monoclonal Antibody at dilution of 1:1000 dilution. Lane A:

HEK293 whole cell lysate.

**Observed-MW:63 kDa**

**Calculated-MW:63 kDa**

### Preparation & Storage

<b>Storage</b>	Store at -20°C Valid for 12 months. Avoid freeze / thaw cycles.
<b>Shipping</b>	Ice bag

### Background

ATP + a protein = ADP + a phosphoprotein. Phosphorylates and activates not only PKB/AKT, but also PKA, PKC-zeta, RPS6KA1 and RPS6KB1. May play a general role in signaling processes and in development (By similarity). Isoform 3 is catalytically inactive. PTM: Phosphorylated on tyrosine and serine/threonine. Phosphorylation on Ser-241 in the activation loop is required for full activity. PDK1 itself can autophosphorylate Ser-241, leading to its own activation. similarity: Belongs to the protein kinase superfamily. similarity: Belongs to the protein kinase superfamily. AGC Ser/Thr protein kinase family. PDK1 subfamily. similarity: Contains 1 PH domain. similarity: Contains 1 protein kinase domain. subcellular location: Membrane-associated after cell stimulation leading to its translocation. Tyrosine phosphorylation seems to occur only at the plasma membrane. subunit: Interacts with TUSC4. tissue specificity: Appears to be expressed ubiquitously.

### For Research Use Only

Toll-free: 1-888-852-8623  
Web: [www.elabscience.com](http://www.elabscience.com)

Tel: 1-832-243-6086  
Email: [techsupport@elabscience.com](mailto:techsupport@elabscience.com)

Fax: 1-832-243-6017

Rev. V1.0