

RUSC1 Polyclonal Antibody

catalog number: E-AB-19038

Note: Centrifuge before opening to ensure complete recovery of vial contents.

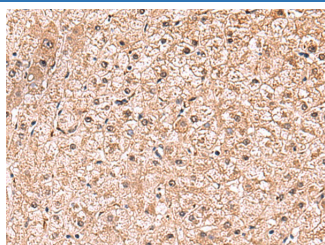
Description

Reactivity	Human
Immunogen	Fusion protein of human RUSC1
Host	Rabbit
Isotype	IgG
Purification	Antigen affinity purification
Conjugation	Unconjugated
buffer	Phosphate buffered solution, pH 7.4, containing 0.05% stabilizer and 50% glycerol.

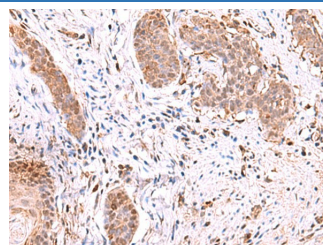
Applications

Applications	Recommended Dilution
IHC	1:50-1:300

Data



Immunohistochemistry of paraffin-embedded Human liver cancer tissue using RUSC1 Polyclonal Antibody at dilution of 1:90 (×200)



Immunohistochemistry of paraffin-embedded Human esophagus cancer tissue using RUSC1 Polyclonal Antibody at dilution of 1:90 (×200)

Preparation & Storage

Storage	Store at -20°C Valid for 12 months. Avoid freeze / thaw cycles.
Shipping	The product is shipped with ice pack, upon receipt, store it immediately at the temperature recommended.

Background

Putative signaling adapter which may play a role in neuronal differentiation. May be involved in regulation of NGF-dependent neurite outgrowth. Proposed to play a role in neuronal vesicular trafficking, specifically involving pre-synaptic membrane proteins. Seems to be involved in signaling pathways that are regulated by the prolonged activation of MAPK. Can regulate the polyubiquitination of IKBKG and thus may be involved in regulation of the NF-kappa-B pathway.

For Research Use Only