

FGL2 Polyclonal Antibody

Catalog Number: E-AB-52189



Note: Centrifuge before opening to ensure complete recovery of vial contents.

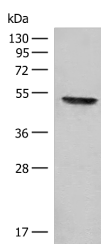
Description

Reactivity	Human, Mouse, Rat
Immunogen	Fusion protein of human FGL2
Host	Rabbit
Isotype	IgG
Purification	Antigen affinity purification
Conjugation	Unconjugated
Formulation	PBS with 0.05% NaN ₃ and 40% Glycerol, pH7.4

Applications Recommended Dilution

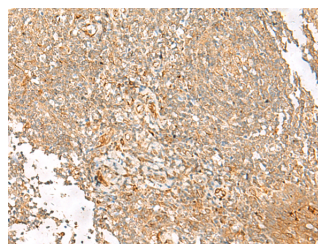
WB	1:500-1:2000
IHC	1:50-1:300
ELISA	1:5000-1:10000

Data



Western blot analysis of Mouse thymus tissue lysate using FGL2 Polyclonal Antibody at dilution of 1:300

Observed Mw: Refer to figures
Calculated Mw: 50 kDa



Immunohistochemistry of paraffin-embedded Human tonsil tissue using FGL2 Polyclonal Antibody at dilution of 1:45 (x200)

Preparation & Storage

Storage Store at -20°C. Avoid freeze / thaw cycles.

Background

The protein encoded by this gene is a secreted protein that is similar to the beta- and gamma-chains of fibrinogen. The carboxyl-terminus of the encoded protein consists of the fibrinogen-related domains (FRED). The encoded protein forms a tetrameric complex which is stabilized by interchain disulfide bonds. This protein may play a role in physiologic functions at mucosal sites. FGL2 (Fibrinogen Like 2) is a Protein Coding gene. Diseases associated with FGL2 include Viral Hepatitis and Hepatitis B. Among its related pathways are Innate Immune System. An important paralog of this gene is ANGPT2.

For Research Use Only

A Reliable Research Partner in Life Science and Medicine

Toll-free: 1-888-852-8623

Web: www.elabscience.com

Tel: 1-832-243-6086

Email: techsupport@elabscience.com

Fax: 1-832-243-6017