

## MORF4L1 Polyclonal Antibody

**catalog number: E-AB-53393**

**Note:** Centrifuge before opening to ensure complete recovery of vial contents.

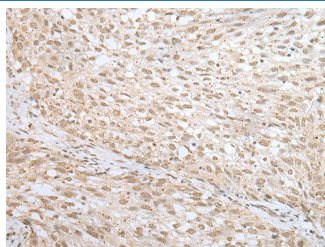
### Description

<b>Reactivity</b>	Human;Mouse;Rat
<b>Immunogen</b>	Synthetic peptide of human MORF4L1
<b>Host</b>	Rabbit
<b>Isotype</b>	IgG
<b>Purification</b>	Antigen affinity purification
<b>Buffer</b>	Phosphate buffered solution, pH 7.4, containing 0.05% stabilizer and 50% glycerol.

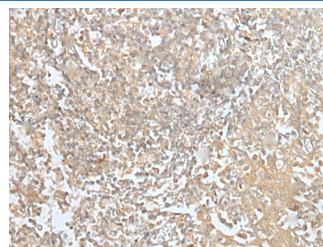
### Applications Recommended Dilution

<b>IHC</b>	1:30-1:150
------------	------------

### Data



Immunohistochemistry of paraffin-embedded Human lung cancer tissue using MORF4L1 Polyclonal Antibody at dilution of 1:45(×200)



Immunohistochemistry of paraffin-embedded Human tonsil tissue using MORF4L1 Polyclonal Antibody at dilution of 1:45(×200)

### Preparation & Storage

<b>Storage</b>	Store at -20°C Valid for 12 months. Avoid freeze / thaw cycles.
<b>Shipping</b>	The product is shipped with ice pack,upon receipt,store it immediately at the temperature recommended.

### Background

MORF4L1 (also known as MRG15) and MORF4-related gene X (MRGX).The human MORF4 gene maps to chromosome 4q33-q34.1.MORF4 induces a senescent-like phenotype in complementation group B immortal cell lines.The genes encoding MRG15 and MRGX map to chromosomes 15q24 and Xq22, respectively.MORF4, MORF4L1 and MRGX each contain a C-terminal leucine zipper.An association between MORF4L1, Rb (retinoblastoma tumor suppressor) and PAM14 (protein associated with MORF4L1) suggests a role for MORF4L1 in transcription regulation.

### For Research Use Only