

## Purified Anti-Human TRAV5 Antibody[MH3-2]

catalog number: AN003690P

**Note:** Centrifuge before opening to ensure complete recovery of vial contents.

### Description

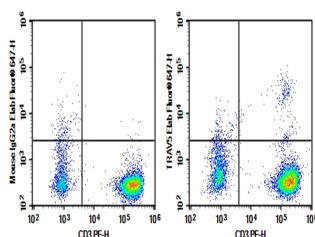
<b>Reactivity</b>	Human
<b>Immunogen</b>	Recombinant Human TRAV5 protein
<b>Host</b>	Mouse
<b>Isotype</b>	Mouse IgG2a, $\kappa$
<b>Clone</b>	MH3-2
<b>Purification</b>	>98%, Protein A/G purified
<b>Conjugation</b>	Unconjugated
<b>Buffer</b>	Phosphate-buffered solution, pH 7.2, containing 0.05% non-protein stabilizer. Dialyze to completely remove the stabilizer prior to labeling.

### Applications

### Recommended Dilution

<b>FCM</b>	2 $\mu\text{g/mL}$ ( $0.5 \times 10^6$ - $1 \times 10^6$ cells)
------------	---

### Data



Human peripheral blood lymphocytes were stained with 0.2  $\mu\text{g}$  Purified Anti-Human TRAV5 Antibody[MH3-2] (Right) and 0.2  $\mu\text{g}$  Mouse IgG2a,  $\kappa$  Isotype Control (Left), followed by

Elab Fluor® 647-conjugated Goat Anti-Mouse IgG Secondary Antibody, then anti-Human CD3 PE-conjugated Monoclonal Antibody.

### Preparation & Storage

<b>Storage</b>	Store at 4°C valid for 12 months or -20°C valid for long term storage, avoid freeze / thaw cycles.
<b>Shipping</b>	Ice bag

### Background

V $\beta$ 5 T cell receptor (TCR V $\beta$ 5) is a variant of the TCR  $\beta$  chain which is heterodimerized with TCR  $\alpha$  chain and expressed on a subset of  $\alpha\beta$  T cells. TCR  $\alpha/\beta$  recognizes peptides presented by the MHC molecules and initiates T cell mediated immune responses. Patients with multiple sclerosis present an expansion of V $\beta$ 5.2+/5.3+ autoreactive T cells.