

Recombinant Mouse Hemopexin/HPX Protein (His Tag)

Catalog Number: PKSM041334

Note: Centrifuge before opening to ensure complete recovery of vial contents.

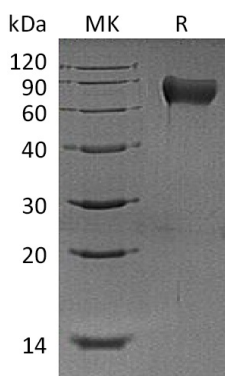
Description

Species	Mouse
Source	HEK293 Cells-derived Mouse Hemopexin/HPX protein Ser24-Gln460, with an C-terminal His
Calculated MW	49.8 kDa
Observed MW	65-90 kDa
Accession	Q91X72
Bio-activity	Not validated for activity

Properties

Purity	> 95 % as determined by reducing SDS-PAGE.
Concentration	Subject to label value.
Endotoxin	< 1.0 EU per µg of the protein as determined by the LAL method.
Storage	Store at < -20°C, stable for 6 months. Please minimize freeze-thaw cycles.
Shipping	This product is provided as liquid. It is shipped at frozen temperature with blue ice/gel packs. Upon receipt, store it immediately at < -20°C.
Formulation	Supplied as a 0.2 µm filtered solution of 20mM MES, 150mM NaCl, pH 5.5.

Data



Background

Hemopexin (HPX) is plasma glycoprotein belongs to the family of the acute-phase proteins whose synthesis is induced after an inflammatory event. Hemopexin with two four-bladed beta -propeller folds has been found in other proteins including collagenases and provides sites for protein-protein interactions. The liver is the major synthesizing organ. Hemopexin participates in maintaining and recycling the iron pool by utilizing its high binding affinity toward heme composed of protoporphyrin IX and iron. It also functions in preventing oxidation caused by heme after hemolysis. Hydrophobic heme molecules can intercalate into lipid membranes and participate in the oxidation of lipid membrane components through the Fenton reaction resulting in lipid peroxidation. Hemopexin undergoes a conformational change upon the binding of heme. The conformational change allows hemopexin to interact with a specific receptor, forming a complex which is then internalized. Heme concentrations in plasma increase after hemolysis, which is associated with several pathological conditions such as reperfusion injury and ischemia.

For Research Use Only