

Lgals3 Polyclonal Antibody

catalog number: E-AB-40655

Note: Centrifuge before opening to ensure complete recovery of vial contents.

Description

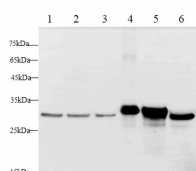
| | |
|---------------------|--|
| Reactivity | Human;mouse;Rat |
| Immunogen | Recombinant Rat Lgals3 protein expressed by E.coli |
| Host | Rabbit |
| Isotype | IgG |
| Purification | Antigen Affinity Purification |
| Conjugation | Unconjugated |
| Buffer | PBS with 0.05% Proclin300, 1% protective protein and 50% glycerol, pH7.4 |

Applications

Recommended Dilution

| | |
|-----------|-------------|
| WB | 1:250-1:500 |
|-----------|-------------|

Data



Western blot with Lgals3 Polyclonal antibody at dilution of 1:500. lane 1: Hela whole cell lysate, lane 2: MCF-7 whole cell lysate, lane 3: A431 whole cell lysate, lane 4: RAW264.7 whole cell lysate, lane 5: NIH/3T3 whole cell lysate, lane 6: C6 whole cell lysate

Observed-MW:28 kDa

Calculated-MW:26 kDa

Preparation & Storage

| | |
|-----------------|--|
| Storage | Store at -20°C Valid for 12 months. Avoid freeze / thaw cycles. |
| Shipping | The product is shipped with ice pack, upon receipt, store it immediately at the temperature recommended. |

Background

Galactose-specific lectin which binds IgE. May mediate with the alpha-3, beta-1 integrin the stimulation by CSPG4 of endothelial cells migration. Together with DMBT1, required for terminal differentiation of columnar epithelial cells during early embryogenesis. In the nucleus: acts as a pre-mRNA splicing factor. Involved in acute inflammatory responses including neutrophil activation and adhesion, chemoattraction of monocytes macrophages, opsonization of apoptotic neutrophils, and activation of mast cells. Together with TRIM16, coordinates the recognition of membrane damage with mobilization of the core autophagy regulators ATG16L1 and BECN1 in response to damaged endomembranes.

For Research Use Only