

FITC Anti-Mouse CD326/EpCAM Antibody[G8.8]

Catalog Number: E-AB-F1181UC

Note: Centrifuge before opening to ensure complete recovery of vial contents.

Description

| | |
|--------------------------------|--|
| Reactivity | Mouse |
| Host | Rat |
| Isotype | Rat IgG2a, κ |
| Clone No. | G8.8 |
| Isotype Control | FITC Rat IgG2a, κ Isotype Control[2A3] [Product E-AB-F09833C] |
| Conjugation | FITC |
| Conjugation Information | FITC is designed to be excited by the Blue laser (488 nm) and detected using an optical filter centered near 530 nm (e.g., a 525/40 nm bandpass filter). |
| Storage Buffer | Phosphate buffered solution, pH 7.2, containing 0.09% stabilizer and 1% protein protectant. |

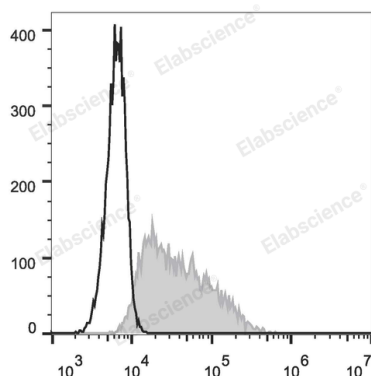
Applications

Recommended usage

FCM

Each lot of this antibody is quality control tested by flow cytometric analysis. Please check your vial before the experiment. Since applications vary, the appropriate dilutions must be determined for individual use. We suggest each investigator should titrate the reagent to obtain optimal results [The recommended concentration is 0.1-1 $\mu\text{g}/10^6$ cells in 100 μL volume].

Data



4T-1 cells are stained with FITC Anti-Mouse CD326 Antibody (filled gray histogram). Unstained cells (empty black histogram) are used as control.

Preparation & Storage

| | |
|-----------------|---|
| Storage | Keep as concentrated solution. This product can be stored at 2-8°C for 12 months. Please protected from prolonged exposure to light and do not freeze. |
| Shipping | Ice bag |

Antigen Information

| | |
|------------------------|-------------------------------------|
| Alternate Names | EGP314;Ep-CAM;EpCAM;Megp314;Tacstd1 |
| Uniprot ID | Q99JW5 |
| Gene ID | 17075 |

For Research Use Only

Background

EpCAM (CD326) mediates calcium-independent homophilic cell to cell adhesion. It may also function as a growth factor receptor. It is thought to be involved in maintaining cells in position during proliferation. Expression of EpCAM seems to correlate inversely with the level of E-cadherin (CD324). EpCAM is considered important in tumor biology.

For Research Use Only