

## Purified Anti-Human CD11a Antibody[R7-1]

**catalog number: E-AB-F1211A**

**Note:** Centrifuge before opening to ensure complete recovery of vial contents.

### Description

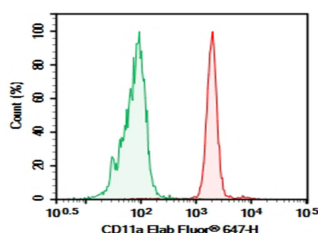
<b>Reactivity</b>	Human
<b>Immunogen</b>	Recombinant Human CD11A protein
<b>Host</b>	Mouse
<b>Isotype</b>	Mouse IgG1,κ
<b>Clone</b>	R7-1
<b>Purification</b>	>98%, Protein A/G purified
<b>Buffer</b>	Phosphate-buffered solution, pH 7.2, containing 0.05% non-protein stabilizer. Dialyze to completely remove the stabilizer prior to labeling.

### Applications

### Recommended Dilution

<b>FCM</b>	2 µg/mL(0.5×10 <sup>6</sup> -1×10 <sup>6</sup> cells)
------------	---

### Data



Human peripheral blood granulocytes cell were stained with 0.2 µg Purified Anti-Human CD11a Antibody[R7-1] (Right) and 0.2 µg Mouse IgG1, κ Isotype Control (Left), followed by

Elab Fluor® 647-conjugated Goat Anti-Mouse IgG Secondary Antibody.

### Preparation & Storage

<b>Storage</b>	Store at 4°C valid for 12 months or -20°C valid for long term storage, avoid freeze / thaw cycles.
<b>Shipping</b>	Ice bag

### Background

CD11a is a 170-180 kD type I transmembrane glycoprotein also known as LFA-1α chain and integrin αL subunit. CD11a non-covalently associates with integrin β2 (CD18) to form LFA-1. It is expressed on all leukocytes, including B and T lymphocytes, monocytes, macrophages, neutrophils, basophils and eosinophils. It is absent on non-hematopoietic tissues and platelets. CD11a plays a central role in leukocyte cell-cell interactions and is important in lymphocyte costimulation. CD11a/CD18 binds to ICAM-1 (CD54), ICAM-2 (CD102), and ICAM-3 (CD50).

### For Research Use Only